



Product Catalogue



Hello!

We are a leading UK manufacturer of medicine storage solutions together with hospital & pharmacy furniture. With over 30 years of manufacturing experience we offer an extensive range of UK manufactured hospital and pharmacy furniture solutions.

Our helpful and knowledgeable customer service team are able to offer you product assistance and support throughout your decision making process. Our support team are here to help keep you running afterwards too. We offer a complete back up service to keep our products running smoothly.

If you require any further assistance, please do not hesitate to contact us to discuss your queries or to arrange visit from one of our sales team.

Contact...

Our offices are open and staffed 8.00AM to 4.30PM Monday - Thursday and 8.00AM - 3.30PM Fridays:

Telephone:

01623 559966

Email:

sales@pharmacymedical.co.uk

Web:

www.drugs-cabinets.co.uk

What we do...

We manufacture and stock a wide range of Controlled Drugs Cabinets to cater for all your requirements, if you need a special size, we can do that too. Just let us have your specific sizes and we'll manufacture it, to your exact specifications, it's that simple.

Misuse of drugs (Safe Custody) regulations 1975

Our controlled drugs cabinets are manufactured in the U.K. and meet, or surpass, the requirements of the "Misuse of Drugs (Safe Custody) Regulations 1973" and BS2881:1989 level one, the requirement for the storage of controlled drugs in the United Kingdom.

Built in our own production facilities in the East Midlands, our controlled drugs cabinets are of superior quality compared to many others currently available and we invite you to come see for yourself, it would be a pleasure to demonstrate our cabinets to you.

Savings...

We offer you a significant saving buying direct from us, the manufacturer, and the complete assurance that all of our controlled drugs cabinets meet or exceed "The misuse of Drugs (safe custody) Regulations 1975".



11598

Controlled Drugs Cabinets

Here at Pharmacy Medical, all our controlled drugs cabinets surpass the “Misuse of Drugs (Safe Custody) Regulations 1973” and exceed BS2881:1989 level one. With the largest stock range of cabinets, we are the go to supplier for controlled drugs cabinet across the independent pharmacy, care, hospital and general medical sectors. With over twenty-five years of manufacturing experience both in cabinet and medical equipment production we have a reputation for quality and service envied by their competitors.

We manufacture all our cabinets ourselves. Now more so than ever. We do not use external companies to manufacture for us. Therefore, we have complete control over the manufacturing process from start to finish. In addition, we conduct every part of manufacturing a controlled drugs cabinet on site in our factory in the East Midlands.

Generic Controlled Drugs Cabinet Features

- ✓ BS2881:1989 Level 1 compliant.
- ✓ Fully Misuse of Drugs Act 1973 compliant.
- ✓ 1.5mm thick mild steel, fully welded construction.
- ✓ Full length piano hinge with welded hinge pins.
- ✓ Anti jimmy return preventing removal of door even if the hinge is removed.
- ✓ BS3621:1998 complaint 6-pin euro profile cylinder lock with 3 keys.
- ✓ Hygienic and tough white powder coated finish.
- ✓ Adjustable shelving on select models.
- ✓ In Stock for next day dispatch, please see our delivery information for more.
- ✓ Bespoke manufacturing option available.



| Specification | |
|---------------------|--------------------|
| Material Thickness: | 1.5mm Mild Steel |
| Construction: | Welded; Fully |
| Locks: | 6-Pin Euro Profile |

Bespoke!

Pharmacy Medical® can produce purpose-made controlled drugs cabinets to suit your specific and unique requirements, email Pharmacy Medical® today. Or telephone 01623 559966 for an extremely competitive quote!



Controlled Drugs Cabinets

| Code | Sizes in mm; H x W x D | Volume (L) | Fixing | Internal Shelving | Door Shelving | Locks |
|---------|--------------------------------------|------------|--------|-------------------|-----------------|-------|
| ADC100 | 170 X 300 X 185mm | 8.7 | Floor | 0 | 0 | 1 |
| CDC100 | 250 X 300 X 150mm | 5.4 | Wall | 0 | 1 | 1 |
| CDC001 | 300 X 210 X 270mm | 17 | Wall | 1 (Removable) | 0 | 1 |
| CDC002 | 335 X 300 X 270mm | 27 | Wall | 1 (Removable) | 0 | 1 |
| CDC101S | 480 X 560 X 160mm | 43 | Wall | 2 | 0 | 1 |
| CDC101 | 480 X 560 X 160mm | 43 | Wall | Structure | 4 | 1 |
| CDC102S | 520 X 570 X 200mm | 60 | Wall | 2 | 0 | 1 |
| CDC102 | 520 X 570 X 200mm | 60 | Wall | Structure | 5 | 1 |
| CDC103 | 860 X 760 X 310mm | 196 | Wall | 3 | 4 | 1 |
| CDC203 | 600 X 900 X 300mm – Double Door | 162 | Wall | 6 | 6 | 1 |
| CDC204 | 1730 X 760 X 300mm – 2 Cabinets | 395 | Wall | 3 (Per Cabinet) | 4 (Per Cabinet) | 2 |
| CDC303 | 860 X 760 X 310mm + Internal Cabinet | 196 | Wall | 4 + 2 | 4 | 2 |
| CDC104 | 1750 X 760 X 300mm | 400 | Wall | 4 | 1 | 2 |
| CDC905 | 500 X 300 X 270mm | 40 | Floor | 2 | 0 | 1 |
| CDC906 | 695 X 470 X 480mm | 156 | Floor | 2 | 3 | 1 |
| CDC1010 | 550 X 335 X 270mm | 50 | Wall | 2 | 0 | 1 |
| CDC1012 | 600 X 400 X 200mm | 48 | Wall | 2 | 0 | 1 |
| CDC1020 | 550 X 500 X 300mm | 83 | Wall | 2 | 0 | 1 |
| CDC1030 | 850 X 500 X 300mm | 128 | Wall | 3 | 0 | 1 |
| CDC1035 | 850 X 500 X 300mm | 128 | Wall | 3 | 4 | 1 |
| CDC1040 | 850 X 500 X 450mm | 191 | Wall | 3 | 0 | 1 |
| CDC1050 | 1250 X 500 X 450mm | 281 | Wall | 4 | 0 | 2 |
| CDC1060 | 1900 X 500 X 300mm | 400 | Wall | 6 | 0 | 2 |
| CDC1070 | 1900 X 500 X 450mm | 428 | Wall | 6 | 0 | 2 |



Medicine / Drugs Cabinets – Deep Shelves

All our medicine cabinets are manufactured from 0.9mm thick mild steel and feature a welded construction. Our cabinets also feature a 6-pin euro profile lock and fully adjustable internal shelving. PLEASE NOTE: These cabinets do not conform to the "Misuse of Drugs (Safe Custody) Regulations 1975" and are not suitable for the storage of controlled drugs. Please see our controlled drugs cabinets for controlled drugs storage.

Generic Medicine Cabinet Specification...

- ✓ Single Point Locking.
- ✓ Single and double door options.
- ✓ Wall fixing options.
- ✓ BS3621:1998 compliant lock, Kitemarked - KM532920, security grade 5.
- ✓ Compatible with Assa ABLOY® CLIQ™ electronic locking system. Integrating audit trails and remote management in real time.
- ✓ Can be optioned with a micro-switch to connect to external nurse call systems.
- ✓ Can be optioned with our external warning light system - factory fit option only.
- ✓ Mounting holes provided in the rear of the cabinet - (Fixings included).



- ✓ CDC001 CDC002 and CDC905 can be installed into our Drug & Medicine cabinets for enhanced security. Must be ordered together.
- ✓ Right hand opening as standard, left hand opening optional.
- ✓ Hooks to the rear of the cabinet to hold MDS Blister pack frames.
- ✓ Full specification & stock levels online: www.drugs-cabinets.co.uk

| Specification | |
|---------------------|--------------------|
| Material Thickness: | 0.9mm Mild Steel |
| Construction: | Welded |
| Locks: | 6-Pin Euro Profile |

| Code | Sizes in mm; H x W x D | Volume (L) | Fixing | Internal Shelving | Door Shelving | Locks |
|--------|----------------------------------|------------|--------|-------------------|---------------|-------|
| MED100 | 370 X 275 X 245mm | 25 | Wall | 1 | 0 | 1 |
| MED230 | 600 X 300 X 300mm | 54 | Wall | 3 | 0 | 1 |
| MED250 | 600 X 500 X 300mm | 90 | Wall | 3 | 0 | 1 |
| MED200 | 600 X 600 X 300mm | 108 | Wall | 3 | 0 | 1 |
| MED350 | 900 X 500 X 300mm | 135 | Wall | 4 | 0 | 1 |
| MED300 | 900 X 600 X 300mm | 162 | Wall | 4 | 0 | 1 |
| MED401 | 600 X 800 X 300mm – Double Door | 144 | Wall | 8 | 0 | 1 |
| MED402 | 900 X 800 X 300mm – Double Door | 216 | Wall | 8 | 0 | 1 |
| MED403 | 600 X 1000 X 300mm – Double Door | 180 | Wall | 8 | 0 | 1 |
| MED404 | 900 X 1000 X 300mm – Double Door | 270 | Wall | 8 | 0 | 1 |



Medicine / Drugs Cabinets – Shelves & Door Shelves

All our medicine cabinets are manufactured from 0.9mm thick mild steel and feature a welded construction. Our cabinets also feature a 6-pin euro profile lock and fully adjustable internal shelving. PLEASE NOTE: These cabinets do not conform to the "Misuse of Drugs (Safe Custody) Regulations 1975" and are not suitable for the storage of controlled drugs. Please see our controlled drugs cabinets for controlled drugs storage.

Generic Medicine Cabinet Specification...

- ✓ Single Point Locking.
- ✓ Single and double door options.
- ✓ Wall fixing options.
- ✓ BS3621:1998 compliant lock, Kitemarked - KM532920, security grade 5.
- ✓ Compatible with Assa ABLOY® CLIQ™ electronic locking system. Integrating audit trails and remote management in real time.
- ✓ Can be optioned with a micro-switch to connect to external nurse call systems.
- ✓ Can be optioned with our external warning light system - factory fit option only.
- ✓ Mounting holes provided in the rear of the cabinet - (Fixings included).



- ✓ CDC001 CDC002 and CDC905 can be installed into our Drug & Medicine cabinets for enhanced security. Must be ordered together.
- ✓ Right hand opening as standard, left hand opening optional.
- ✓ Hooks to the rear of the cabinet to hold MDS Blister pack frames.
- ✓ Full specification & stock levels online: www.drugs-cabinets.co.uk

| Specification | |
|---------------------|--------------------|
| Material Thickness: | 0.9mm Mild Steel |
| Construction: | Welded |
| Locks: | 6-Pin Euro Profile |

| Code | Sizes in mm; H x W x D | Volume (L) | Fixing | Internal Shelving | Door Shelving | Locks |
|--------|----------------------------------|------------|--------|-------------------|---------------|-------|
| MED100 | 370 X 275 X 245mm | 25 | Wall | 1 | 1 | 1 |
| MED230 | 600 X 300 X 300mm | 54 | Wall | 3 | 2 | 1 |
| MED250 | 600 X 500 X 300mm | 90 | Wall | 3 | 2 | 1 |
| MED200 | 600 X 600 X 300mm | 108 | Wall | 3 | 2 | 1 |
| MED350 | 900 X 500 X 300mm | 135 | Wall | 4 | 3 | 1 |
| MED300 | 900 X 600 X 300mm | 162 | Wall | 4 | 3 | 1 |
| MED401 | 600 X 800 X 300mm – Double Door | 144 | Wall | 8 | 5 | 1 |
| MED402 | 900 X 800 X 300mm – Double Door | 216 | Wall | 8 | 8 | 1 |
| MED403 | 600 X 1000 X 300mm – Double Door | 180 | Wall | 8 | 5 | 1 |
| MED404 | 900 X 1000 X 300mm – Double Door | 270 | Wall | 8 | 8 | 1 |



Medicine / Drugs Cabinets – Double Locking

All our medicine cabinets are manufactured from 0.9mm thick mild steel and feature a welded construction. Our cabinets also feature a 6-pin euro profile lock and fully adjustable internal shelving. PLEASE NOTE: These cabinets do not conform to the "Misuse of Drugs (Safe Custody) Regulations 1975" and are not suitable for the storage of controlled drugs. Please see our controlled drugs cabinets for controlled drugs storage.



Specification

| | |
|---------------------|--------------------|
| Material Thickness: | 0.9mm Mild Steel |
| Construction: | Welded |
| Locks: | 6-Pin Euro Profile |

Generic Medicine Cabinet Specification...

- ✓ Single Point Locking.
- ✓ Independent Locking left to right cabinet compartments.
- ✓ Wall fixing options.
- ✓ BS3621:1998 compliant lock, Kitemarked - KM532920, security grade 5.
- ✓ Compatible with Assa ABLOY® CLIQ™ electronic locking system. Integrating audit trails and remote management in real time.
- ✓ Can be optioned with a micro-switch to connect to external nurse call systems.
- ✓ Can be optioned with our external warning light system - factory fit option only.
- ✓ Mounting holes provided in the rear of the cabinet - (Fixings included).
- ✓ CDC001 CDC002 and CDC905 can be installed into our Drug & Medicine cabinets for enhanced security. Must be ordered together.
- ✓ Full specification & stock levels online: www.drugs-cabinets.co.uk

| Code | Sizes in mm; H x W x D | Volume (L) | Fixing | Internal Shelving | Door Shelving | Locks |
|--------|----------------------------------|------------|--------|-------------------|---------------|-------|
| MED401 | 600 X 800 X 300mm – Double Door | 144 | Wall | 8 | 4 | 2 |
| MED402 | 900 X 800 X 300mm – Double Door | 216 | Wall | 8 | 4 | 2 |
| MED403 | 600 X 1000 X 300mm – Double Door | 180 | Wall | 8 | 4 | 2 |
| MED404 | 900 X 1000 X 300mm – Double Door | 270 | Wall | 8 | 4 | 2 |



Medicine / Drugs Cabinets with Controlled Drugs Inners

Medicine Cabinets with Controlled Drugs cabinets inside. BS 2881:1989 compliant medicine cabinets with BS2881:1989 and Misuse of drugs (Safe Custody) Act compliant controlled drugs cabinet inner. These cabinets are designed to comply with CQC guidance on storing medicines and controlled drugs in care homes.

These external medicine cabinets are available with a selection of three internal controlled drugs cabinets. The three internal cabinet options offer a good choice of storage options, depending on your CD storage needs. These cabinets are below:



CDC001 (Opt. A)



CDC002 (Opt. B)



CDC905 (Opt. C)



Medicine Cabinets with Controlled Drugs Cabinets Inside

| Code | Outer Medicine Cabinet Sizes in mm; H x W x D | Inner CD Cabinet Sizes in mm; H x W x D | Fixing |
|----------|--|--|--------|
| CMED250A | 600 X 500 X 300mm SINGLE DOOR, 2 FULL DEPTH SHELVES | 300 X 210 X 270mm 1 SHELF (Removable) | Wall |
| CMED250B | 600 X 500 X 300mm SINGLE DOOR, 2 FULL DEPTH SHELVES | 335 X 300 X 270mm 1 SHELF (Removable) | Wall |
| CMED250C | 600 X 500 X 300mm SINGLE DOOR, 2 FULL DEPTH SHELVES | 500 X 300 X 270mm 2 SHELVES (Adjustable) | Wall |
| CMED200A | 600 X 600 X 300mm SINGLE DOOR, 2 FULL DEPTH SHELVES | 300 X 210 X 270mm 1 SHELF (Removable) | Wall |
| CMED200B | 600 X 600 X 300mm SINGLE DOOR, 2 FULL DEPTH SHELVES | 335 X 300 X 270mm 1 SHELF (Removable) | Wall |
| CMED200C | 600 X 600 X 300mm SINGLE DOOR, 2 FULL DEPTH SHELVES | 500 X 300 X 270mm 2 SHELVES (Adjustable) | Wall |
| CMED350A | 900 X 500 X 300mm SINGLE DOOR, 3 FULL DEPTH SHELVES | 300 X 210 X 270mm 1 SHELF (Removable) | Wall |
| CMED350B | 900 X 500 X 300mm SINGLE DOOR, 3 FULL DEPTH SHELVES | 335 X 300 X 270mm 1 SHELF (Removable) | Wall |
| CMED350C | 900 X 500 X 300mm SINGLE DOOR, 3 FULL DEPTH SHELVES | 500 X 300 X 270mm 2 SHELVES (Adjustable) | Wall |
| CMED300A | 900 X 600 X 300mm SINGLE DOOR, 3 FULL DEPTH SHELVES | 300 X 210 X 270mm 1 SHELF (Removable) | Wall |
| CMED300B | 900 X 600 X 300mm SINGLE DOOR, 3 FULL DEPTH SHELVES | 335 X 300 X 270mm 1 SHELF (Removable) | Wall |
| CMED300C | 900 X 600 X 300mm SINGLE DOOR, 3 FULL DEPTH SHELVES | 500 X 300 X 270mm 2 SHELVES (Adjustable) | Wall |
| CMED401A | 600 X 800 X 300mm DOUBLE DOOR, 6 FULL DEPTH SHELVES | 300 X 210 X 270mm 1 SHELF (Removable) | Wall |
| CMED401B | 600 X 800 X 300mm DOUBLE DOOR, 6 FULL DEPTH SHELVES | 335 X 300 X 270mm 1 SHELF (Removable) | Wall |
| CMED401C | 600 X 800 X 300mm DOUBLE DOOR, 6 FULL DEPTH SHELVES | 500 X 300 X 270mm 2 SHELVES (Adjustable) | Wall |
| CMED402A | 900 X 800 X 300mm DOUBLE DOOR, 6 FULL DEPTH SHELVES | 300 X 210 X 270mm 1 SHELF (Removable) | Wall |
| CMED402B | 900 X 800 X 300mm DOUBLE DOOR, 6 FULL DEPTH SHELVES | 335 X 300 X 270mm 1 SHELF (Removable) | Wall |
| CMED402C | 900 X 800 X 300mm DOUBLE DOOR, 6 FULL DEPTH SHELVES | 500 X 300 X 270mm 2 SHELVES (Adjustable) | Wall |
| CMED403A | 600 X 1000 X 300mm DOUBLE DOOR, 6 FULL DEPTH SHELVES | 300 X 210 X 270mm 1 SHELF (Removable) | Wall |
| CMED403B | 600 X 1000 X 300mm DOUBLE DOOR, 6 FULL DEPTH SHELVES | 335 X 300 X 270mm 1 SHELF (Removable) | Wall |
| CMED403C | 600 X 1000 X 300mm DOUBLE DOOR, 6 FULL DEPTH SHELVES | 500 X 300 X 270mm 2 SHELVES (Adjustable) | Wall |
| CMED404A | 900 X 1000 X 300mm DOUBLE DOOR, 6 FULL DEPTH SHELVES | 300 X 210 X 270mm 1 SHELF (Removable) | Wall |
| CMED404B | 900 X 1000 X 300mm DOUBLE DOOR, 6 FULL DEPTH SHELVES | 335 X 300 X 270mm 1 SHELF (Removable) | Wall |
| CMED404C | 900 X 1000 X 300mm DOUBLE DOOR, 6 FULL DEPTH SHELVES | 500 X 300 X 270mm 2 SHELVES (Adjustable) | Wall |



Lock Specification... (Medicine and CD Cabinets)

Here at Pharmacy Medical we use the same lock across all of our cabinets. We do this to keep things simple. The regulations we manufacture our cabinets to say that we should use a 5-pin euro profile lock for BS2881:1989, and 6-pin or 7 lever mortice lock for the Misuse of Drugs Act compliant cabinets. We stopped using mortice locks years ago as locking technologies overtook their slightly dated nature.

Our current locking cylinder is sourced from Yale and is a 6-pin euro profile which we combine with a mortice bolt to lock the cabinet. The advantages of using a euro profile is numerous. Not only is it a better lock all round, but it allows us to offer electronic locking systems, such as Abloy Cliq with our cabinets.

Lock Specification...

- ✓ 6 Pin Euro-profile cylinder euro profile cylinder lock incorporating Anti-pick, anti-drill, anti-bump and fire resistant features.
- ✓ Independently tested to meet BS: EN1303:2005
- ✓ Kitemark - KM532920
- ✓ TS007 1 Star Cylinder
- ✓ Key security grade 5
- ✓ Torque resistance of plug/cylinder relevant to attack resistance – 30 Nm
- ✓ Meets the MLA vulnerability test for cylinders
- ✓ 10 Year Lock Cylinder guarantee from manufacturer.
- ✓ Key Retention - Key cannot be removed when the cabinet door is open.
- ✓ Hardened steel mortise bolt with anti-saw facility incorporated in cabinet design.
- ✓ 14mm deadbolt throw.



Patients & Residents Own Medication Cabinets - POD Lockers

Mild steal welded construction, these POD lockers are ideal for storing medicines at a patients or residents bedside in a care or hospital environment. Available in a wide range of sizes, and with different locking options, including new Cliq compatible systems.

Generic POD Locker Specification...

- ✓ Single Point Locking.
- ✓ Optional internal shelving
- ✓ Available as bottom or side hinge
- ✓ Available with a CAM, key code or RFID swipe card access locks
- ✓ Can be made compatible with Assa ABLOY® CLIQ™ electronic locking system. Integrating audit trails and remote management in real time.
- ✓ Solid door option only
- ✓ Mounting holes to the rear of the cabinet (fixings NOT included)
- ✓ Manufactured from 1.2mm thick mild steel - spot welded
- ✓ Full specification & stock levels online: www.drugs-cabinets.co.uk



Standard Colours

- ✓ White epoxy powder coat

Locking Options

- ✓ Cam lock as standard, supplied with two keys, keyed to differ. Master option available at cost.
- ✓ Electronic push button lock
- ✓ Electronic RFID swipe card lock



| Specification | |
|---------------------|-------------------|
| Material Thickness: | 1.2mm Mild Steel |
| Construction: | Welded |
| Locks: | Cam Lock Standard |



| Code | Sizes in mm; H x W x D | Volume (L) | Fixing | Internal Shelving |
|--------|------------------------|------------|--------|-------------------|
| POC100 | 275 x 370 x 250 | 25 | Wall | Optional |
| POD213 | 220 x 160 x 320 | 20 | Wall | Optional |
| POD313 | 320 x 160 x 320 | 28 | Wall | Optional |
| POD314 | 420 x 160 x 320 | 30 | Wall | Optional |



Drug & Medicine Cabinets - Tower & Base Units

Exceed the requirements for the storage of medicines in healthcare premises; BS2881:1989 Level one
BS3621:1998 compliant 6-Pin euro profile cylinder lock supplied by Yale® - 3 keys supplied per lock

Generic Tower & Base Unit Specification...

- ✓ Single door options.
- ✓ Wall fixing options.
- ✓ BS3621:1998 compliant lock, Kitemarked - KM532920, security grade 5.
- ✓ Compatible with Assa ABLOY® CLIQ™ electronic locking system. Integrating audit trails and remote management in real time.
- ✓ Mechanical push button option available.
- ✓ Can be optioned with a micro-switch to connect to external nurse call systems.
- ✓ Can be optioned with our external warning light system - factory fit option only.
- ✓ Mounting holes provided in the rear of the cabinet.
- ✓ Right hand opening as standard, left hand opening optional.
- ✓ Either plastic tray or shelving options available.
- ✓ Tower and base unit heights available.
- ✓ Full specification & stock levels online: www.drugs-cabinets.co.uk

Standard Colours

- ✓ White epoxy powder coat



Locking Options

- ✓ 6 Pin Euro profile, keyed to differ as standard
- ✓ Electronic push button lock
- ✓ Electronic RFID swipe card lock



| Specification | |
|---------------------|-----------------------------|
| Material Thickness: | 1.2mm Mild Steel |
| Construction: | Welded |
| Locks: | 6 Pin Euro Profile standard |

| Code | Sizes in mm; H x W x D | Tower / Base | Internal Shelving |
|---------|------------------------|--------------|-----------------------|
| PMDTC01 | 1650 x 580 x 490mm | Tower | Plastic Trays |
| PMDTC02 | 1650 x 580 x 490mm | Tower | Shelving |
| PMDTC03 | 1650 x 580 x 490mm | Tower | Shelves with dividers |
| PMBU01 | 870 x 580 x 490mm | Base | Plastic Trays |
| PMBU02 | 870 x 580 x 490mm | Base | Shelving |
| PMBU03 | 870 x 580 x 490mm | Base | Shelves with dividers |

MDS Drugs Trolleys

Our MDS drugs trolley design has allowed us to offer many new features. These include electronic locking, a choice of coloured doors, note shelves and improved capacity. We've done all this and reduced the overall weight of the trolley without impacting on strength.

Our monitored dosage trolleys will withstand the rigours of a medicine round due to their very robust design. Locking swivel castors allow excellent manoeuvrability of the trolley through narrow doorways and corridors. Pharmacy Medical manufacture all these Monitored Dosage Drug Trolleys offering you quick delivery to anywhere within the mainland United Kingdom. All prices quoted INCLUDE delivery to any UK mainland address! Our highly qualified engineers manufacture all our Monitored Dosage System (MDS) Trolleys. This produces the highest possible standard of trolley.

What to Look For...

Pharmacy Medicals continued design and development enables us to engineer out common problems found with MDS drugs trolleys. Our years of experience with drugs trolleys, ensures we know the common problems encountered daily. As a result, we have engineered our trolleys to be resilient and durable to these common problems. We have written more on this, however there are three main areas to look for when buying a drugs trolley:

- ✓ **Locks:** It can be found that locks are not durable enough to survive the repeated use they are subjected to, or that keys break in the locks themselves. Pharmacy Medical use a Yale cylinder combined with a quality mortice bolt to ensure a reliable lock and action. In addition, all trolleys feature an extended base to further protect the keys when they are in the lock. Should the worst happen, all our keys are easy to replace. Take one of the two spares to a hardware shop and they can cut a replacement usually whilst you wait.
- ✓ **Castors:** Castors can cause several problems on drugs trolleys. Often found to clog, or at worst fall off, they are vital yet often vulnerable. Pharmacy Medicals trolleys use hygienic medical castors. These anti-static castors are lockable and come with bumpers offering protection to the trolley, castor and the building itself. Furthermore, Pharmacy Medical bolt the castors using nyloc nuts to a reinforced base. This provides a strong anchor point and prevents the castors coming loose from the trolley.
- ✓ **Hinge:** The hinges used on a trolley is very important. The doors on the trolley can often carry the most weight as bottles of liquids are often stored here. Pharmacy Medical use full length piano hinge on their trolleys, ensuring that the doors will handle anything thrown at them.



| Specification | |
|---------------------|-----------------------------|
| Material Thickness: | 1.2mm Mild Steel |
| Construction: | Welded |
| Locks: | 6 Pin Euro Profile standard |



Pharmacy Drugs Trolleys – Original Packaging

- ✓ Suitable for the storage & distribution of medicines and drugs.
- ✓ BS3621:1998 compliant 6-Pin euro profile cylinder Single and double door options.
- ✓ Available as double and single door options

Generic Drugs Trolley Specification...

- ✓ Wall fixing clamp option.
- ✓ BS3621:1998 compliant lock, Kitemarked - KM532920, security grade 5.
- ✓ Compatible with Assa ABLOY® CLIQ™ electronic locking system. Integrating audit trails and remote management in real time.
- ✓ Electronic push button option available.
- ✓ Other door colours can be specified on request.
- ✓ Door shelves - 3 shelves per door.
- ✓ Upper work surface
- ✓ Push handles to one end
- ✓ 4 x locking 125mm polymer anti static castors with bumpers.
- ✓ When not in use, the trolley should be secured to the fabric of the building.
- ✓ Full specification & stock levels online: www.drugs-cabinets.co.uk lock supplied by Yale® - 3 keys supplied per lock.

Standard Colours

- ✓ White epoxy powder coat – Body
- ✓ Spearmint epoxy powder coat - Doors

Locking Options

- ✓ 6 Pin Euro profile as standard
- ✓ Electronic push button lock

Dimensions

- ✓ Single Door - 1150mm H x 570mm W x 580mm D
- ✓ Double Door - 1160mm H x 780mm W (670mm less handles) x 580mm D



Specification

Material Thickness: 1.2mm Mild Steel

Construction: Welded

Locks: 6 Pin Euro Profile standard

| Code | Description | Doors | Internal Layout | Door Shelves |
|-------|-------------------------------------|-------|-----------------------|--------------|
| PM501 | 21 TRAY COMPACT UNIT DOSAGE TROLLEY | 1 | 21 Blue Trays | 3 |
| PM650 | 25 TRAY COMPACT UNIT DOSAGE TROLLEY | 2 | 25 Clear Trays | 6 |
| PM655 | 30 TRAY COMPACT UNIT DOSAGE TROLLEY | 2 | 30 Clear Trays | 6 |
| PM660 | 36 TRAY COMPACT UNIT DOSAGE TROLLEY | 2 | 36 White / Teal Trays | 0 |



Pharmacy Drugs Trolleys - MDS Blister Pack System - Hooks

- ✓ Suitable for the storage & distribution of medicines and drugs.
- ✓ BS3621:1998 compliant 6-Pin euro profile cylinder Single and double door options.
- ✓ Available as double and single door options

Generic Drugs Trolley Specification...

- ✓ Wall fixing clamp option.
- ✓ BS3621:1998 compliant lock, Kitemarked - KM532920, security grade 5.
- ✓ Compatible with Assa ABLOY® CLIQ™ electronic locking system. Integrating audit trails and remote management in real time.
- ✓ Electronic push button option available.
- ✓ Other door colours can be specified on request.
- ✓ Door shelves - 3 shelves per door.
- ✓ Upper work surface
- ✓ Push handles to one end
- ✓ 4 x locking 125mm polymer anti static castors with bumpers.
- ✓ When not in use, the trolley should be secured to the fabric of the building.
- ✓ Full specification & stock levels online: www.drugs-cabinets.co.uk lock supplied by Yale® - 3 keys supplied per lock.

Standard Colours

- ✓ White epoxy powder coat – Body
- ✓ Spearmint epoxy powder coat - Doors

Locking Options

- ✓ 6 Pin Euro profile as standard
- ✓ Electronic push button lock
- ✓ Electronic RFID swipe card lock

Dimensions

- ✓ Single Door - 1150mm H x 570mm W x 580mm D
- ✓ Double Door - 1160mm H x 780mm W (670mm less handles) x 580mm D



| Specification | |
|---------------------|-----------------------------|
| Material Thickness: | 1.2mm Mild Steel |
| Construction: | Welded |
| Locks: | 6 Pin Euro Profile standard |

| Code | Description | Doors | Internal Layout | Door Shelves |
|-------|-----------------------------------|-------|-----------------|--------------|
| PM110 | Monitored Dosage Trolley 4 Hoop | 1 | 4 Hooks | 3 |
| PM210 | Monitored Dosage Trolley 6 Hoop | 2 | 6 Hooks | 6 |



Pharmacy Drugs Trolleys - MDS Blister Pack System - Shelves

- ✓ Suitable for the storage & distribution of medicines and drugs.
- ✓ BS3621:1998 compliant 6-Pin euro profile cylinder Single and double door options.
- ✓ Available as double and single door options

Generic Drugs Trolley Specification...

- ✓ Wall fixing clamp option.
- ✓ BS3621:1998 compliant lock, Kitemarked - KM532920, security grade 5.
- ✓ Compatible with Assa ABLOY® CLIQ™ electronic locking system. Integrating audit trails and remote management in real time.
- ✓ Electronic push button option available.
- ✓ Other door colours can be specified on request.
- ✓ Door shelves - 3 shelves per door.
- ✓ Internal Shelves – 3 Height adjustable shelves.
- ✓ Upper work surface
- ✓ Push handles to one end
- ✓ 4 x locking 125mm polymer anti static castors with bumpers.
- ✓ When not in use, the trolley should be secured to the fabric of the building.
- ✓ Full specification & stock levels online: www.drugs-cabinets.co.uk lock supplied by Yale® - 3 keys supplied per lock.

Standard Colours

- ✓ White epoxy powder coat – Body
- ✓ Spearmint epoxy powder coat - Doors

Locking Options

- ✓ 6 Pin Euro profile as standard
- ✓ Electronic push button lock
- ✓ Electronic RFID swipe card lock

Dimensions

- ✓ Single Door - 1150mm H x 570mm W x 580mm D
- ✓ Double Door - 1160mm H x 780mm W (670mm less handles) x 580mm D



| Specification | |
|---------------------|-----------------------------|
| Material Thickness: | 1.2mm Mild Steel |
| Construction: | Welded |
| Locks: | 6 Pin Euro Profile standard |

| Code | Description | Doors | Internal Layout | Door Shelves |
|-------|-----------------------------------|-------|-----------------|--------------|
| PM150 | Monitored Dosage Trolley 6 Hoop | 1 | 3 Shelves | 3 |
| PM220 | Monitored Dosage Trolley 9 Hoop | 2 | 3 Shelves | 6 |



Gas Storage Cabinets

- ✓ designed to store general gas cylinders securely outside.
- ✓ Available with internal racking to store medical gas cylinders (Shown).

Generic Specification...

- ✓ 1.2mm thick stainless steel construction
- ✓ Ventilated doors
- ✓ Welded construction
- ✓ 3-point locking system
- ✓ Optional additional hasp and staple lock



Dimensions

- ✓ 1460mm High x 1100mm Wide x 680mm Deep

| Specification | |
|---------------------|---------------------------|
| Material Thickness: | 1.2mm Stainless Steel |
| Construction: | Welded |
| Locks: | Multi Point Lock standard |



IV Poles / Infusion Stands

- ✓ BS 3619:1976 Compliant

Generic Specification...

- ✓ Stainless steel or powder coated mild steel options.
- ✓ Standard or weighted bases.
- ✓ 2 or 4 hook upper
- ✓ Height adjustable 1270 – 2000mm
- ✓ 35mm rubber twin wheel castors – 2 braked

Dimensions

- ✓ 650 x 650 x 1270-2000mm
- ✓ Our mild steel IV stands feature a 4mm thick mild steel base with a 5 prong star design and 5 castors for increased stability. Welded to this is a mild steel upright housing a stainless steel upper section. Atop this are 2 or 4 pig tail type hooks designed to hold IV's etc. A weighted base is optional and recommended for larger bags. The mild steel lower section of this trolley is powder coated white.
- ✓ Our stainless steel IV stands feature a 4mm thick stainless steel base with a 5 prong star design and 5 castors for increased stability. Welded to this is a stainless steel upright housing a stainless steel upper section. Atop this are 2 or 4 pig tail type hooks designed to hold IV's etc. A weighted base is optional and recommended for larger bags.



HTM71

Manufactured in house at Pharmacy Medical, these storage units are designed to offer HTM71 compatible storage and dispensing solutions. Manufactured from either powder coated mild steel or medical grade mild steel, all our ward trolleys are fitted with 75mm braked castors for easy manoeuvrability, or feet on the storage units. All our ward trolleys are also fitted with a removable stainless steel top and protective bumpers at all four corners.

All our ward trolleys feature enclosed sides to improve the security of the contents stored within. Furthermore, these trolleys can be fitted with a locked door, increasing security further. As standard the trolleys and storage units are supplied with fixed antibacterial liners that can be easily cleaned and allow for multiple positioning of the optional trays they are designed to house. The principle is the same for our HTM71 storage units, enclosed sides and optional locking doors add another level of security.

Features:

- ✓ Mild steel powder-coated construction.
- ✓ Supplied fully assembled (just position your optional trays).
- ✓ Locking castors fitted to all four corners (trolleys only).
- ✓ Protective bumpers fitted to all four corners (trolleys only).
- ✓ Removable stainless steel top (trolleys only).

Options:

Our HTM71 style trolleys can be optioned with:

- ✓ Medical grade stainless steel construction.
- ✓ Internal HTM71 plastic trays.
- ✓ Locking doors.
- ✓ Landscape or portrait construction.
- ✓ Push handles fitted to one end.

Our HTM71 style cabinets can be optioned with:

- ✓ Medical grade stainless steel construction.
- ✓ Internal HTM71 plastic trays.
- ✓ Locking doors.
- ✓ Landscape or portrait construction.



HTM71

Cabinets...

- ✓ Mild steel welded and powder-coated construction.
- ✓ Supplied fully assembled (just position your optional trays).
- ✓ Single point locking, one lock supplied with three keys.
- ✓ BS3621 compliant lock, supplied by Yale
- ✓ BS BS2881:1989, level one



Tower Dimensions

- Landscape:
 - 1800 mm High x 750 mm Wide x 550 mm Deep - Tray dimensions: 600mm wide x 400mm deep x either 100 or 200mm high.
- Portrait:
 - 1800 mm High x 550 mm Wide x 655 mm Deep - Tray dimensions: 400mm wide x 600mm deep x either 100 or 200mm high.

Base Unit Dimensions

- Landscape:
 - 900 mm High x 750 mm Wide x 550 mm Deep - Tray dimensions: 600mm wide x 400mm deep x either 100 or 200mm high.
- Portrait:
 - 900 mm High x 550 mm Wide x 655 mm Deep - Tray dimensions: 400mm wide x 600mm deep x either 100 or 200mm high.

Trolleys...

- ✓ Mild steel powder-coated construction.
- ✓ Supplied fully assembled (just position your optional trays).
- ✓ Locking castors fitted to all four corners.
- ✓ Protective bumpers fitted to all four corners.
- ✓ Removable stainless steel top.

Trolley Options...

- ✓ Medical grade stainless steel construction.
- ✓ Internal HTM71 plastic trays. (Shown)
- ✓ Locking doors.
- ✓ Landscape or portrait construction.
- ✓ Push handles fitted to one end.

Dimensions

- ✓ Portrait and landscape options



Hazardous Substance CoSHH Cabinets

- ✓ Hazardous substance cabinets enable workplaces to clearly isolate and identify hazardous substances as set out in CoSHH guidelines.
- ✓ Yellow Colour supplied with the relevant warning labels



Generic Specification...

- ✓ 1.2mm mild steel construction
- ✓ Welded liquid retaining sump
- ✓ 3 point locking system supplied with 2 keys
- ✓ Highly visible warning labels
- ✓ Yellow colour powder coated finish
- ✓ Height adjustable shelving
- ✓ UK manufactured

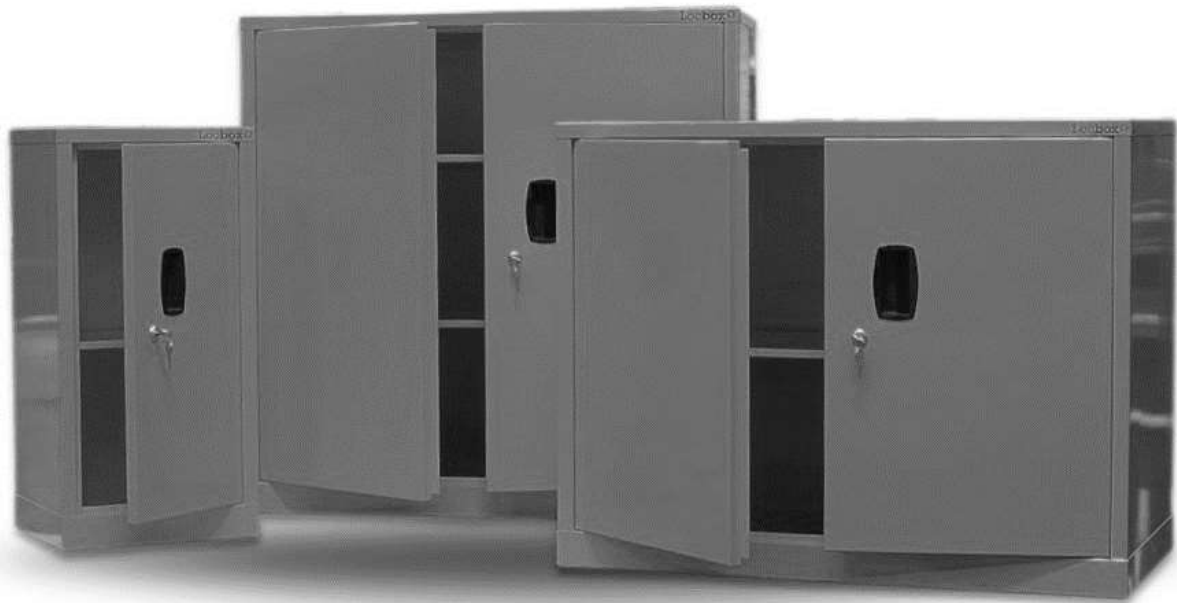
| Specification | |
|---------------------|---------------------------|
| Material Thickness: | 1.2mm Mild Steel |
| Construction: | Welded |
| Locks: | Multi Point Lock standard |

| Code | Description | Doors | Internal Shelves |
|----------|---|-------|------------------|
| HAZ733 | HAZARDOUS SUBSTANCE CABINET SINGLE DOOR, ONE SHELF 700mm (H) x 350mm (W) x 300mm (D) YELLOW | 1 | 1 |
| HAZ633 | HAZARDOUS SUBSTANCE CABINET SINGLE DOOR, ONE SHELF 600mm (H) x 600mm (W) x 300mm (D) YELLOW | 1 | 1 |
| HAZ944 | HAZARDOUS SUBSTANCE CABINET SINGLE DOOR, ONE SHELF 900mm (H) x 460mm (W) x 460mm (D) YELLOW | 1 | 1 |
| HAZ794D | HAZARDOUS SUBSTANCE CABINET DOUBLE DOOR, TWO SHELVES 700mm (H) x 900mm (W) x 460mm (D) YELLOW | 2 | 2 |
| HAZ994D | HAZARDOUS SUBSTANCE CABINET DOUBLE DOOR, TWO SHELVES 900mm (H) x 900mm (W) x 460mm (D) YELLOW | 2 | 2 |
| HAZ1294D | HAZARDOUS SUBSTANCE CABINET DOUBLE DOOR, FOUR SHELVES 1200mm (H) x 900mm (W) x 460mm (D) YELLOW | 2 | 4 |
| HAZ1874D | HAZARDOUS SUBSTANCE CABINET DOUBLE DOOR, FOUR SHELVES 1800mm (H) x 700mm (W) x 400mm (D) YELLOW | 2 | 4 |



General CoSHH Cabinets

- ✓ CoSHH cabinets enable workplaces to clearly isolate and identify general CoSHH substances as set out in CoSHH guidelines.
- ✓ Grey Colour supplied with the relevant warning labels



Generic Specification...

- ✓ 1.2mm mild steel construction
- ✓ Welded liquid retaining sump
- ✓ 3 point locking system supplied with 2 keys
- ✓ Highly visible warning labels
- ✓ Grey colour powder coated finish
- ✓ Height adjustable shelving
- ✓ UK manufactured

| Specification | |
|---------------------|---------------------------|
| Material Thickness: | 1.2mm Mild Steel |
| Construction: | Welded |
| Locks: | Multi Point Lock standard |

| Code | Description | Doors | Internal Shelves |
|---------|---|-------|------------------|
| CH733 | GENERAL COsHH CABINET SINGLE DOOR, ONE SHELF 700mm (H) x 350mm (W) x 300mm (D) GREY | 1 | 1 |
| CH633 | GENERAL COsHH CABINET SINGLE DOOR, ONE SHELF 600mm (H) x 600mm (W) x 300mm (D) GREY | 1 | 1 |
| CH944 | GENERAL COsHH CABINET SINGLE DOOR, ONE SHELF 900mm (H) x 460mm (W) x 460mm (D) GREY | 1 | 1 |
| CH794D | GENERAL COsHH CABINET DOUBLE DOOR, TWO SHELVES 700mm (H) x 900mm (W) x 460mm (D) GREY | 2 | 2 |
| CH994D | GENERAL COsHH CABINET DOUBLE DOOR, TWO SHELVES 900mm (H) x 900mm (W) x 460mm (D) GREY | 2 | 2 |
| CH1294D | GENERAL COsHH CABINET DOUBLE DOOR, FOUR SHELVES 1200mm (H) x 900mm (W) x 460mm (D) GREY | 2 | 4 |



Acid and Alkali CoSHH Cabinets

- ✓ Acid and alkali cabinets enable workplaces to clearly isolate and identify caustic substances as set out in CoSHH guidelines.
- ✓ White Colour supplied with the relevant warning labels



Generic Specification...

- ✓ 1.2mm mild steel construction
- ✓ Welded liquid retaining sump
- ✓ 3 point locking system supplied with 2 keys
- ✓ Highly visible warning labels
- ✓ White colour powder coated finish
- ✓ Height adjustable shelving
- ✓ UK manufactured



| Code | Description | Doors | Internal Shelves |
|---------|--|-------|------------------|
| AA733 | ACID/ALKALI CABINET SINGLE DOOR, ONE SHELF 700mm (H) x 350mm (W) x 300mm (D) WHITE | 1 | 1 |
| AA633 | ACID/ALKALI CABINET SINGLE DOOR, ONE SHELF 600mm (H) x 600mm (W) x 300mm (D) WHITE | 1 | 1 |
| AA944 | ACID/ALKALI CABINET SINGLE DOOR, ONE SHELF 900mm (H) x 460mm (W) x 460mm (D) WHITE | 1 | 1 |
| AA794D | ACID/ALKALI CABINET DOUBLE DOOR, TWO SHELVES 700mm (H) x 900mm (W) x 460mm (D) WHITE | 2 | 2 |
| AA994D | ACID/ALKALI CABINET DOUBLE DOOR, TWO SHELVES 900mm (H) x 900mm (W) x 460mm (D) WHITE | 2 | 2 |
| AA1294D | ACID/ALKALI CABINET DOUBLE DOOR, FOUR SHELVES 1200mm (H) x 900mm (W) x 460mm (D) WHITE | 2 | 4 |

| Specification | |
|---------------------|---------------------------|
| Material Thickness: | 1.2mm Mild Steel |
| Construction: | Welded |
| Locks: | Multi Point Lock standard |



Medical Records Trolleys

- ✓ Suitable for the secure storage of medical records
- ✓ Available with secure locked compartments.

Generic Trolley Specification...

- ✓ Secure upper storage are (when lock optioned)
- ✓ Secure Lower storage cupboard (Secure Trolleys Only)
- ✓ Compatible with Assa ABLOY® CLIQ™ electronic locking system. Integrating audit trails and remote management in real time.
- ✓ Lower Shelf. – None secure units
- ✓ 4 x 125mm anti static braked castors, supplied with bumpers.
- ✓ Full specification & stock levels online: www.drugs-cabinets.co.uk

Standard Colours

- ✓ Cabinet: - White Epoxy powder coat
- ✓ Doors – Spearmint Epoxy powder coat

Dimensions

- ✓ Small - (H x W x D) 670mm x 520mm x 1000mm
- ✓ Medium - (H x W x D) 850mm x 520mm x 1000mm
- ✓ Large - (H x W x D) 1160mm x 520mm x 1000mm
- ✓ Secure Small - 950mm High x 800mm Wide x 470mm Deep
- ✓ Secure Large - 950mm High x 1040mm Wide x 470mm Deep (Shown)

Locking

- ✓ Unlocked
- ✓ Cam Lock
- ✓ 6-Pin Mortice Lock
- ✓ Push Button Key Code Lock
- ✓ Swipe Card Lock



Dispensing Trolleys - Standard & High Capacity

- ✓ Suitable for the storage & dispensing of drugs & medicines.
- ✓ BS3621:1998 compliant 6-Pin euro profile cylinder lock supplied by Yale® - 3 keys supplied per lock.

Generic Trolley Specification...

- ✓ Single door to main medicine storage area.
- ✓ BS3621:1998 compliant lock, Kitemarked - KM532920, security grade 5.
- ✓ Compatible with Assa ABLOY® CLIQ™ electronic locking system. Integrating audit trails and remote management in real time.
- ✓ Lower Shelf.
- ✓ Hinged note shelf to one side.
- ✓ Two slide out plastic storage or waste bins.
- ✓ 4 x 125mm anti static braked castors, supplied with bumpers.
- ✓ 5 Tier rack - Optional
- ✓ Full specification & stock levels online: www.drugs-cabinets.co.uk

Standard Colours

- ✓ Cabinet: White - Epoxy powder coat
- ✓ Shelf & note tray - Spearmint

Dimensions

- ✓ Small - 650mm W x 470mm D x 1100mm H
- ✓ Medium - 890mm W x 470mm D x 1100mm H
- ✓ Large - 1050mm W x 470mm D x 1100mm H



Specification

Material Thickness: 1.2mm Mild Steel

Construction: Welded

Locks: Cam Lock standard



Carry Carts

- ✓ Ideal for storage of loose items, or for storage and distribution.
- ✓ Colour coded trays to assist

Generic Trolley Specification...

- ✓ Easy to clean, powder coated steel frame.
- ✓ Easy to steer and manoeuvre, with ergonomic handles and braked & bumped castors for safety.
- ✓ Featuring the unique Glide & Tilt® system for easy and safe access
- ✓ Spare Trays Available
- ✓ Available either with our without double depth trays.
- ✓ Full specification & stock levels online: www.drugs-cabinets.co.uk

Standard Colours

- ✓ Primary Green
- ✓ Primary Blue
- ✓ Primary Yellow
- ✓ Light Grey
- ✓ Primary Red
- ✓ Transparent trays are available (at extra cost)



| Code | Description |
|-------------|---|
| PM-CARRY/2 | 2 Tier Carry Cart with 12 Tray Capacity |
| PM-CARRY/2T | 2 Tier Carry Cart with 12 Trays - Primary Colours |
| PM-CARRY/3 | 3 Tier Carry Cart with 18 Tray Capacity |
| PM-CARRY/3T | 3 Tier Carry Cart with 18 Trays - Primary Colours |
| PM-CARRY/4 | 4 Tier Carry Cart with 24 Tray Capacity |
| PM-CARRY/4T | 4 Tier Carry Cart with 24 Trays - Primary Colours |



CareKarts

These trolleys are available as standard in a wide range of variations, with different drawer and handle combinations as standard. Furthermore we offer customisation to stainless steel frames, double width variations and double height versions too. Please contact us for more information.

Generic Trolley Specification...

- ✓ Suitable for the secure storage of loose items etc
- ✓ Single and double column versions, with and without push handles
- ✓ Secure doors optional
- ✓ Solid colour drawers standard, transparent optional
- ✓ Full specification & stock levels online: www.drugs-cabinets.co.uk

| Specification | |
|---------------------|-------------------|
| Material Thickness: | 1.2mm Mild Steel |
| Construction: | Welded |
| Locks: | Cam Lock standard |

Standard Colours

- ✓ Cabinet: - White Epoxy powder coat
- ✓ Drawers – Primary Green standard.

Dimensions

- ✓ Shallow Drawers - W 469
x L 425 x D 77mm
- ✓ Double Drawers - W 469
x L 425 x D 157mm



| Code | Description |
|--------|--|
| PMKT01 | CareKart STORAGE TROLLEY, SINGLE COLUMN 3 Shallow, 1 Deep Trays Push Handles |
| PMKT02 | CareKart STORAGE TROLLEY, SINGLE COLUMN 3 Shallow, 2 Deep Trays Push Handles |
| PMKT03 | CareKart STORAGE TROLLEY, SINGLE COLUMN 4 Deep Trays Push Handles |
| PMKT04 | CareKart STORAGE TROLLEY, SINGLE COLUMN 4 Shallow, 1 Deep Trays Push Handles |
| PMKT05 | CareKart STORAGE TROLLEY, SINGLE COLUMN 6 Shallow Push Handles |
| PMKT06 | CareKart STORAGE TROLLEY, SINGLE COLUMN 3 Shallow, 1 Deep Trays NO Handles |
| PMKT07 | CareKart STORAGE TROLLEY, SINGLE COLUMN 3 Shallow, 2 Deep Trays NO Handles |
| PMKT08 | CareKart STORAGE TROLLEY, SINGLE COLUMN 4 Deep Trays NO Handles |
| PMKT09 | CareKart STORAGE TROLLEY, SINGLE COLUMN 4 Shallow, 1 Deep Trays NO Handles |
| PMKT10 | CareKart STORAGE TROLLEY, SINGLE COLUMN 6 Shallow NO Handles |
| PMKT21 | CareKart STORAGE TROLLEY, DOUBLE COLUMN 6 Shallow, 2 Deep Trays Push Handles |
| PMKT22 | CareKart STORAGE TROLLEY, DOUBLE COLUM 6 Shallow, 4 Deep Trays Push Handles |
| PMKT23 | CareKart STORAGE TROLLEY, DOUBLE COLUM 8 Deep Trays Push Handles |
| PMKT24 | CareKart STORAGE TROLLEY, DOUBLE COLUM 8 Shallow, 2 Deep Trays Push Handles |
| PMKT25 | CareKart STORAGE TROLLEY, DOUBLE COLUM 12 Shallow Push Handles |
| PMKT26 | CareKart STORAGE TROLLEY, DOUBLE COLUM 6 Shallow, 2 Deep Trays NO Handles |
| PMKT27 | CareKart STORAGE TROLLEY, DOUBLE COLUM 6 Shallow, 4 Deep Trays NO Handles |
| PMKT28 | CareKart STORAGE TROLLEY, DOUBLE COLUM 8 Deep Trays NO Handles |
| PMKT29 | CareKart STORAGE TROLLEY, DOUBLE COLUM 8 Shallow, 2 Deep Trays NO Handles |
| PMKT30 | CareKart STORAGE TROLLEY, DOUBLE COLUM 12 Shallow NO Handles |



Distribution Trolleys - Lockable Drawers

- ✓ Suitable for the storage & distribution of medicines and drugs from the pharmacy to the ward
- ✓ Also suitable for self-administration and patients own drugs schemes

Generic Trolley Specification...

- ✓ Provides secure delivery of drugs and medicines from the pharmacy to the ward.
- ✓ When the drawers are locked, they are secured in place.
- ✓ BS3621:1998 compliant 6-Pin euro profile cylinder lock supplied by Yale® - 3 keys supplied per lock.
- ✓ BS3621:1998 compliant lock, Kitemarked - KM532920, security grade 5.
- ✓ Compatible with Assa ABLOY® CLIQ™ electronic locking system. Integrating audit trails and remote management in real time.
- ✓ Master keys are available at an additional cost.
- ✓ Upper work surface.
- ✓ Document pocket fitted to one end.
- ✓ Push handles to both end.
- ✓ 4 x locking 125mm polymer anti static castors with bumpers to protect the building.
- ✓ Available with 15 or 18 drawers.
- ✓ Full specification & stock levels online: www.drugs-cabinets.co.uk

Standard Colours

- ✓ White epoxy powder coat – Body
- ✓ Spearmint epoxy powder coat - Doors

Dimensions

- ✓ 15 Drawer: 1030mm W x 1000mm H x 525mm D
- ✓ 18 Drawer: 1190mm W x 1000mm H x 525mm D

| Specification | |
|---------------------|-------------------|
| Material Thickness: | 1.2mm Mild Steel |
| Construction: | Welded |
| Locks: | Cam Lock standard |

| Code | Description | Drawers |
|----------|---|---------|
| PMDT1501 | Ward Distribution Trolley | 15 |
| PMDT1801 | Ward Distribution Trolley High Capacity | 18 |



Refrigeration

The Labcold IntelliCold® Pharmacy range has been designed and developed from the ground up for the safe storage of temperature sensitive medicines and vaccines as advised by Public Health England in Protocol for Ordering, Storing and Handling Vaccines.

Featuring the IntelliCold® controller, which automatically records the internal temperature and other fridge functions, these pharmacy refrigerators are designed to meet the requirements of medical professionals.

Backed by a comprehensive FREE 5 year parts and labour warranty*, the Labcold IntelliCold® range is packed with extra features like alarm battery back up and can be further enhanced by the option of a digital lock or repeat alarm.

There are also FREE exclusive Labcold penguins in some of these refrigerators – a must for serious Labcold penguin collectors!

* Free SD card and 5 year warranty UK customers only. You MUST register your warranty with Labcold to qualify.



Drug Denaturing Kits

These controlled drug denaturing kits are to be used with tablets, powders, liquids and ampoules. All of our denaturing kits are available from stock for next day delivery.

Here at Pharmacy Medical we manufacture a wide range of drug denaturing kits. Our kits are available in a wide range of sizes to meet all requirements. From 30ml through to our 5 litre denaturing kit, we have a size to suit all denaturing requirements.

Our single use denaturing kits provide a cost effective solution to denaturing small volumes of drugs. Used by pharmacies, NHS and Ambulance services alike, they save money and reduce waste. We manufacture these ourselves. As a result savings are available for large order volumes. Please contact us for information.

We keep all our denaturing kits in stock making them available for same day dispatch if ordered before 11AM.

As well as keeping our denaturing kits in stock, as we manufacture them ourselves. As a result we can make bespoke sizes, and offer discounts for bulk and repeat orders.

Our denaturing kits are available in a comprehensive range of sizes. By offering such a comprehensive range, we hope there will be a denaturing kit to meet your needs. Drug denaturing kits are a key part of pharmacy drug disposal. We are here to help find the right one for you, at the right price.

Buy your denaturing kits from us with piece of mind they will be with you quickly and safely.

If you need any assistance, please get in touch, we will be happy to help!



| Code | Description |
|------------|--|
| PMDEN250 | DRUG DENATURING KIT 250ml PACK OF 1 |
| 3PMDEN250 | DRUG DENATURING KIT 250ml PACK OF 3 |
| 10PMDEN250 | DRUG DENATURING KIT 250ml PACK OF 10 |
| PMDEN500 | DRUG DENATURING KIT 500ml PACK OF 1 |
| PMDEN1000 | DRUG DENATURING KIT 1000ml PACK OF 1 |
| 2PMDEN1000 | DRUG DENATURING KIT 1000ml PACK OF 2 |
| PMDEN2000 | DRUG DENATURING KIT 2000ml PACK OF 1 |
| PMDEN5000 | DRUG DENATURING KIT 5000ml PACK OF 1 |



How to Order...

- ✓ Orders are required in writing and can be sent to us via post or email. We can accept orders over the telephone, however we will require written confirmation, or payment in full at the time of order.
- ✓ We do not offer account facilities for companies ordering less than 10 units per month.
- ✓ We accept official NHS purchase orders providing they are on official headed paper.
- ✓ All orders must contain an order number, contact name, telephone number and delivery & billing addresses.
- ✓ All current single item prices are available on our website, or you can request a quotation.
- ✓ Payments can be made via cheque, bank transfer or credit / debit card. We prefer for security reasons that you purchase single quantities through our website, however we can accept payments over the telephone.
- ✓ Full terms and conditions can be seen on our website at www.drugs-cabinets.co.uk
- ✓ For further information, assistance and clarification, please call us on 01623 559966

Legal...

- ✓ Pharmacy Medical is a registered trademark of HEC Showman Ltd.
- ✓ HEC Showman Ltd is registered company in England and Wales 3381086, VAT number 694 3803 06
- ✓ All cheques to be made payable to HEC Showman Ltd
- ✓ For full terms and conditions, delivery times and all other products, please see our website
- ✓ All information correct at time of print, specifications subject to change without notice.



- ✓ The Made in Britain logo is copyright of the Great Britain Campaign. Pharmacy Medicals limited company, HEC Showman limited is a paid up member at the time of print.