



# Product Catalogue



## Hello!

We are a leading UK manufacturer of drugs and medicine storage solutions together with hospital furniture. With over 30 years of manufacturing experience we offer an extensive range of UK manufactured hospital and pharmacy furniture solutions. We offer a comprehensive of stock and bespoke items at market leading prices with short lead times.

Our helpful and knowledgeable customer service team are able to offer you product assistance and support throughout your decision making process. Our support team are here to help keep you running afterwards too. We offer a complete back up service to keep our products running smoothly.

If you require any further assistance, please do not hesitate to contact us to discuss your queries or to arrange visit from one of our sales team.

## Contact...

Our offices are open and staffed 8.00AM to 4.30PM Monday - Thursday and 8.00AM - 3.30PM Fridays:

**Telephone:**

01623 559966

**Email:**

[sales@pharmacymedical.co.uk](mailto:sales@pharmacymedical.co.uk)

**Web:**

[www.pharmacymedical.co.uk](http://www.pharmacymedical.co.uk)

## What we do...

We manufacture and stock a wide range of Controlled Drugs Cabinets to cater for all your requirements, if you need a special size, we can do that too. Just let us have your specific sizes and we'll manufacture it, to your exact specifications, it's that simple.

## Misuse of drugs (Safe Custody) regulations 1973

Our controlled drugs cabinets are manufactured in the U.K. and meet, or surpass, the requirements of the "Misuse of Drugs (Safe Custody) Regulations 1973" and BS2881:1989 level one, the requirement for the storage of controlled drugs in the United Kingdom.

Built in our own production facilities in the East Midlands, our controlled drugs cabinets are of superior quality compared to many others currently available and we invite you to come see for yourself, it would be a pleasure to demonstrate our cabinets to you.

## Savings...

We offer you a significant saving buying direct from us, the manufacturer, and the complete assurance that all of our controlled drugs cabinets meet or exceed "The misuse of Drugs (safe custody) Regulations 1973".

## Accreditations & Contracts...

ISO9001:2015 – Certification available on request

**NHS Supply Chain** - Pharmacy Medical are proud to have been approved onto the following NHS Supply Chain Framework Agreement: Medical Healthcare Furniture; Lot 1: Medical Furniture Equipment. Framework Agreement Number: FAG000017380



Certificate Number 11598  
ISO 9001

# Controlled Drugs Cabinets

Here at Pharmacy Medical, all our controlled drugs cabinets surpass the "Misuse of Drugs (Safe Custody) Regulations 1973" and exceed BS2881:1989 level one. With the largest stock range of cabinets, we are the go to supplier for controlled drugs cabinet across the independent pharmacy, care, hospital and general medical sectors. With over twenty-five years of manufacturing experience both in cabinet and medical equipment production we have a reputation for quality and service envied by their competitors.

We manufacture all our cabinets ourselves. Now more so than ever. We do not use external companies to manufacture for us. Therefore, we have complete control over the manufacturing process from start to finish. In addition, we conduct every part of manufacturing a controlled drugs cabinet on site in our factory in the East Midlands.

**The preferred choice of independent pharmacy, healthcare providers and the NHS.**  
**Available direct through Shared Business Services and NHS Supply Chain.**

## Generic Controlled Drugs Cabinet Features

- ✓ Exceeds the requirement for the storage of controlled drugs: "The Misuse of Drugs (Safe Custody) Regulations 1973" 1.5mm thick mild steel, fully welded construction.
- ✓ Compliant with BS2881: 1989 (Security Level One) Specification for Cupboards for the Storage of Medicines in Health Care Premises.
- ✓ BS3621 compliant anti-pick & drill, key retaining six pin cylinder lock (supplied with 3 keys).
- ✓ Compatible with ABLOY® CLIQ™ Remote.
- ✓ Can be optioned with a 9 Volt warning light or volt free contact switch for connection to nurse call system.
- ✓ 1.5mm thick mild steel construction.
- ✓ Fully Welded construction.
- ✓ Reinforced fixing holes to the rear or base depending on model (fixings included).
- ✓ 2mm thick piano hinge down the entire length of the door. Welded hinge pin.
- ✓ Powder coated white for a tough and durable finish.



Specification	
Material Thickness:	1.5mm Mild Steel
Construction:	Welded; Fully
Locks:	6-Pin Euro Profile



## Controlled Drugs Cabinets

Code	Sizes in mm; H x W x D	Volume (L)	Fixing	Internal Shelving	Door Shelving	Locks
ADC100	170 X 300 X 185mm	8.7	Floor	0	0	1
CDC100	250 X 300 X 150mm	5.4	Wall	0	1	1
CDC001	300 X 210 X 270mm	17	Wall	1 (Removable)	0	1
CDC002	335 X 300 X 270mm	27	Wall	1 (Removable)	0	1
CDC101S	480 X 560 X 160mm	43	Wall	2	0	1
CDC101	480 X 560 X 160mm	43	Wall	Structure	4	1
CDC102S	520 X 570 X 200mm	60	Wall	2	0	1
CDC102	520 X 570 X 200mm	60	Wall	Structure	5	1
CDC103	860 X 760 X 310mm	196	Wall	3	4	1
CDC203	600 X 900 X 300mm – Double Door	162	Wall	6	6	1
CDC204	1730 X 760 X 300mm – 2 Cabinets	395	Wall	3 (Per Cabinet)	4 (Per Cabinet)	2
CDC303	860 X 760 X 310mm + Internal Cabinet	196	Wall	4 + 2	4	2
CDC104	1750 X 760 X 300mm	400	Wall	4	1	2
CDC905	500 X 300 X 270mm	40	Floor	2	0	1
CDC906	695 X 470 X 480mm	156	Floor	2	3	1
CDC1010	550 X 335 X 270mm	50	Wall	2	0	1
CDC1012	600 X 400 X 200mm	48	Wall	2	0	1
CDC1020	550 X 500 X 300mm	83	Wall	2	0	1
CDC1030	850 X 500 X 300mm	128	Wall	3	0	1
CDC1035	850 X 500 X 300mm	128	Wall	3	4	1
CDC1040	850 X 500 X 450mm	191	Wall	3	0	1
CDC1050	1250 X 500 X 450mm	281	Wall	4	0	2
CDC1060	1900 X 500 X 300mm	400	Wall	6	0	2
CDC1070	1900 X 500 X 450mm	428	Wall	6	0	2



## Medicine / Drugs Cabinets – Deep Shelves

All our medicine cabinets are manufactured from 0.9mm thick mild steel and feature a welded construction. Our cabinets also feature a 6-pin euro profile lock and fully adjustable internal shelving. PLEASE NOTE: These cabinets do not conform to the "Misuse of Drugs (Safe Custody) Regulations 1975" and are not suitable for the storage of controlled drugs. Please see our controlled drugs cabinets for controlled drugs storage.

### Generic Medicine Cabinet Specification...

- ✓ Single Point Locking.
- ✓ Single and double door options.
- ✓ Wall fixing options.
- ✓ BS3621:1998 compliant lock, Kitemarked - KM532920, security grade 5.
- ✓ Compatible with Assa ABLOY® CLIQ™ electronic locking system. Integrating audit trails and remote management in real time.
- ✓ Can be optioned with a micro-switch to connect to external nurse call systems.
- ✓ Can be optioned with our external warning light system - factory fit option only.
- ✓ Mounting holes provided in the rear of the cabinet - (Fixings included).



- ✓ CDC001 CDC002 and CDC905 can be installed into our Drug & Medicine cabinets for enhanced security. Must be ordered together.
- ✓ Right hand opening as standard, left hand opening optional.
- ✓ Hooks to the rear of the cabinet to hold MDS Blister pack frames.
- ✓ Full specification & stock levels online: [www.drugs-cabinets.co.uk](http://www.drugs-cabinets.co.uk)

Specification	
Material Thickness:	0.9mm Mild Steel
Construction:	Welded
Locks:	6-Pin Euro Profile

Code	Sizes in mm; H x W x D	Volume (L)	Fixing	Internal Shelving	Door Shelving	Locks
MED100	370 X 275 X 245mm	25	Wall	1	0	1
MED230	600 X 300 X 300mm	54	Wall	3	0	1
MED250	600 X 500 X 300mm	90	Wall	3	0	1
MED200	600 X 600 X 300mm	108	Wall	3	0	1
MED350	900 X 500 X 300mm	135	Wall	4	0	1
MED300	900 X 600 X 300mm	162	Wall	4	0	1
MED401	600 X 800 X 300mm – Double Door	144	Wall	8	0	1
MED402	900 X 800 X 300mm – Double Door	216	Wall	8	0	1
MED403	600 X 1000 X 300mm – Double Door	180	Wall	8	0	1
MED404	900 X 1000 X 300mm – Double Door	270	Wall	8	0	1



## Medicine / Drugs Cabinets – Shelves & Door Shelves

All our medicine cabinets are manufactured from 0.9mm thick mild steel and feature a welded construction. Our cabinets also feature a 6-pin euro profile lock and fully adjustable internal shelving. PLEASE NOTE: These cabinets do not conform to the "Misuse of Drugs (Safe Custody) Regulations 1975" and are not suitable for the storage of controlled drugs. Please see our controlled drugs cabinets for controlled drugs storage.

### Generic Medicine Cabinet Specification...

- ✓ Single Point Locking.
- ✓ Single and double door options.
- ✓ Wall fixing options.
- ✓ BS3621:1998 compliant lock, Kitemarked - KM532920, security grade 5.
- ✓ Compatible with Assa ABLOY® CLIQ™ electronic locking system. Integrating audit trails and remote management in real time.
- ✓ Can be optioned with a micro-switch to connect to external nurse call systems.
- ✓ Can be optioned with our external warning light system - factory fit option only.
- ✓ Mounting holes provided in the rear of the cabinet - (Fixings included).



- ✓ CDC001 CDC002 and CDC905 can be installed into our Drug & Medicine cabinets for enhanced security. Must be ordered together.
- ✓ Right hand opening as standard, left hand opening optional.
- ✓ Hooks to the rear of the cabinet to hold MDS Blister pack frames.
- ✓ Full specification & stock levels online: [www.drugs-cabinets.co.uk](http://www.drugs-cabinets.co.uk)

Specification	
Material Thickness:	0.9mm Mild Steel
Construction:	Welded
Locks:	6-Pin Euro Profile

Code	Sizes in mm; H x W x D	Volume (L)	Fixing	Internal Shelving	Door Shelving	Locks
MED101	370 X 275 X 245mm	25	Wall	1	1	1
MED231	600 X 300 X 300mm	54	Wall	3	2	1
MED251	600 X 500 X 300mm	90	Wall	3	2	1
MED201	600 X 600 X 300mm	108	Wall	3	2	1
MED351	900 X 500 X 300mm	135	Wall	4	3	1
MED301	900 X 600 X 300mm	162	Wall	4	3	1
MED411	600 X 800 X 300mm – Double Door	144	Wall	8	5	1
MED412	900 X 800 X 300mm – Double Door	216	Wall	8	8	1
MED413	600 X 1000 X 300mm – Double Door	180	Wall	8	5	1
MED414	900 X 1000 X 300mm – Double Door	270	Wall	8	8	1



## Medicine / Drugs Cabinets with Controlled Drugs Inners

Medicine Cabinets with Controlled Drugs cabinets inside. BS 2881:1989 compliant medicine cabinets with BS2881:1989 and Misuse of drugs (Safe Custody) Act compliant controlled drugs cabinet inner. These cabinets are designed to comply with CQC guidance on storing medicines and controlled drugs in care homes.

These external medicine cabinets are available with a selection of three internal controlled drugs cabinets. The three internal cabinet options offer a good choice of storage options, depending on your CD storage needs. These cabinets are below:



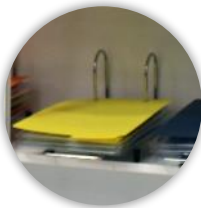
CDC001 (Opt. A)



CDC002 (Opt. B)



CDC905 (Opt. C)





# Medicine Cabinets with Controlled Drugs Cabinets Inside

Code	Outer Medicine Cabinet Sizes in mm; H x W x D	Inner CD Cabinet Sizes in mm; H x W x D	Fixing
CMED250A	600 X 500 X 300mm   SINGLE DOOR, 2 FULL DEPTH SHELVES	300 X 210 X 270mm   1 SHELF (Removable)	Wall
CMED250B	600 X 500 X 300mm   SINGLE DOOR, 2 FULL DEPTH SHELVES	335 X 300 X 270mm   1 SHELF (Removable)	Wall
CMED250C	600 X 500 X 300mm   SINGLE DOOR, 2 FULL DEPTH SHELVES	500 X 300 X 270mm   2 SHELVES (Adjustable)	Wall
CMED200A	600 X 600 X 300mm   SINGLE DOOR, 2 FULL DEPTH SHELVES	300 X 210 X 270mm   1 SHELF (Removable)	Wall
CMED200B	600 X 600 X 300mm   SINGLE DOOR, 2 FULL DEPTH SHELVES	335 X 300 X 270mm   1 SHELF (Removable)	Wall
CMED200C	600 X 600 X 300mm   SINGLE DOOR, 2 FULL DEPTH SHELVES	500 X 300 X 270mm   2 SHELVES (Adjustable)	Wall
CMED350A	900 X 500 X 300mm   SINGLE DOOR, 3 FULL DEPTH SHELVES	300 X 210 X 270mm   1 SHELF (Removable)	Wall
CMED350B	900 X 500 X 300mm   SINGLE DOOR, 3 FULL DEPTH SHELVES	335 X 300 X 270mm   1 SHELF (Removable)	Wall
CMED350C	900 X 500 X 300mm   SINGLE DOOR, 3 FULL DEPTH SHELVES	500 X 300 X 270mm   2 SHELVES (Adjustable)	Wall
CMED300A	900 X 600 X 300mm   SINGLE DOOR, 3 FULL DEPTH SHELVES	300 X 210 X 270mm   1 SHELF (Removable)	Wall
CMED300B	900 X 600 X 300mm   SINGLE DOOR, 3 FULL DEPTH SHELVES	335 X 300 X 270mm   1 SHELF (Removable)	Wall
CMED300C	900 X 600 X 300mm   SINGLE DOOR, 3 FULL DEPTH SHELVES	500 X 300 X 270mm   2 SHELVES (Adjustable)	Wall
CMED401A	600 X 800 X 300mm   DOUBLE DOOR, 6 FULL DEPTH SHELVES	300 X 210 X 270mm   1 SHELF (Removable)	Wall
CMED401B	600 X 800 X 300mm   DOUBLE DOOR, 6 FULL DEPTH SHELVES	335 X 300 X 270mm   1 SHELF (Removable)	Wall
CMED401C	600 X 800 X 300mm   DOUBLE DOOR, 6 FULL DEPTH SHELVES	500 X 300 X 270mm   2 SHELVES (Adjustable)	Wall
CMED402A	900 X 800 X 300mm   DOUBLE DOOR, 6 FULL DEPTH SHELVES	300 X 210 X 270mm   1 SHELF (Removable)	Wall
CMED402B	900 X 800 X 300mm   DOUBLE DOOR, 6 FULL DEPTH SHELVES	335 X 300 X 270mm   1 SHELF (Removable)	Wall
CMED402C	900 X 800 X 300mm   DOUBLE DOOR, 6 FULL DEPTH SHELVES	500 X 300 X 270mm   2 SHELVES (Adjustable)	Wall
CMED403A	600 X 1000 X 300mm   DOUBLE DOOR, 6 FULL DEPTH SHELVES	300 X 210 X 270mm   1 SHELF (Removable)	Wall
CMED403B	600 X 1000 X 300mm   DOUBLE DOOR, 6 FULL DEPTH SHELVES	335 X 300 X 270mm   1 SHELF (Removable)	Wall
CMED403C	600 X 1000 X 300mm   DOUBLE DOOR, 6 FULL DEPTH SHELVES	500 X 300 X 270mm   2 SHELVES (Adjustable)	Wall
CMED404A	900 X 1000 X 300mm   DOUBLE DOOR, 6 FULL DEPTH SHELVES	300 X 210 X 270mm   1 SHELF (Removable)	Wall
CMED404B	900 X 1000 X 300mm   DOUBLE DOOR, 6 FULL DEPTH SHELVES	335 X 300 X 270mm   1 SHELF (Removable)	Wall
CMED404C	900 X 1000 X 300mm   DOUBLE DOOR, 6 FULL DEPTH SHELVES	500 X 300 X 270mm   2 SHELVES (Adjustable)	Wall



## Medicine / Drugs Cabinets – Double Locking

All our medicine cabinets are manufactured from 0.9mm thick mild steel and feature a welded construction. Our cabinets also feature a 6-pin euro profile lock and fully adjustable internal shelving. PLEASE NOTE: These cabinets do not conform to the "Misuse of Drugs (Safe Custody) Regulations 1975" and are not suitable for the storage of controlled drugs. Please see our controlled drugs cabinets for controlled drugs storage.



### Specification

Material Thickness:	0.9mm Mild Steel
Construction:	Welded
Locks:	6-Pin Euro Profile

## Generic Medicine Cabinet Specification...

- ✓ Single Point Locking.
- ✓ Independent Locking left to right cabinet compartments.
- ✓ Wall fixing options.
- ✓ BS3621:1998 compliant lock, Kitemarked - KM532920, security grade 5.
- ✓ Compatible with Assa ABLOY® CLIQ™ electronic locking system. Integrating audit trails and remote management in real time.
- ✓ Can be optioned with a micro-switch to connect to external nurse call systems.
- ✓ Can be optioned with our external warning light system - factory fit option only.
- ✓ Mounting holes provided in the rear of the cabinet - (Fixings included).
- ✓ CDC001 CDC002 and CDC905 can be installed into our Drug & Medicine cabinets for enhanced security. Must be ordered together.
- ✓ Full specification & stock levels online: [www.drugs-cabinets.co.uk](http://www.drugs-cabinets.co.uk)

Code	Sizes in mm; H x W x D	Volume (L)	Fixing	Internal Shelving	Door Shelving	Locks
MED421	600 X 800 X 300mm – Double Door	144	Wall	8	4	2
MED422	900 X 800 X 300mm – Double Door	216	Wall	8	4	2
MED423	600 X 1000 X 300mm – Double Door	180	Wall	8	4	2
MED424	900 X 1000 X 300mm – Double Door	270	Wall	8	4	2



## Lock Specification... (Medicine and CD Cabinets)

Here at Pharmacy Medical we use the same lock across all of our cabinets. We do this to keep things simple. The regulations we manufacture our cabinets to say that we should use a 5-pin euro profile lock for BS2881:1989, and 6-pin or 7 lever mortice lock for the Misuse of Drugs Act compliant cabinets. We stopped using mortice locks years ago as locking technologies overtook their slightly dated nature.

Our current locking cylinder is sourced from Yale and is a 6-pin euro profile which we combine with a mortice bolt to lock the cabinet. The advantages of using a euro profile is numerous. Not only is it a better lock all round, but it allows us to offer electronic locking systems, such as Abloy Cliq with our cabinets.

### Lock Specification...

- ✓ 6 Pin Euro-profile cylinder euro profile cylinder lock incorporating Anti-pick, anti-drill, anti-bump and fire resistant features.
- ✓ Independently tested to meet BS: EN1303:2005
- ✓ Kitemark - KM532920
- ✓ TS007 1 Star Cylinder
- ✓ Key security grade 5
- ✓ Torque resistance of plug/cylinder relevant to attack resistance – 30 Nm
- ✓ Meets the MLA vulnerability test for cylinders
- ✓ 10 Year Lock Cylinder guarantee from manufacturer.
- ✓ Key Retention - Key cannot be removed when the cabinet door is open.
- ✓ Hardened steel mortise bolt with anti-saw facility incorporated in cabinet design.
- ✓ 14mm deadbolt throw.



# Patients & Residents Own Medication Cabinets - POD Lockers

Mild steal welded construction, these POD lockers are ideal for storing medicines at a patients or residents bedside in a care or hospital environment. Available in a wide range of sizes, and with different locking options, including new Cliq compatible systems.

## Generic POD Locker Specification...

- ✓ Single Point Locking.
- ✓ Optional internal shelving
- ✓ Available as bottom or side hinge
- ✓ Available with a CAM, key code or RFID swipe card access locks
- ✓ Can be made compatible with Assa ABLOY® CLIQ™ electronic locking system. Integrating audit trails and remote management in real time.
- ✓ Solid door option only
- ✓ Mounting holes to the rear of the cabinet (fixings NOT included)
- ✓ Manufactured from 1.2mm thick mild steel - spot welded
- ✓ Full specification & stock levels online: [www.drugs-cabinets.co.uk](http://www.drugs-cabinets.co.uk)



## Standard Colours

- ✓ White epoxy powder coat

## Locking Options

- ✓ Cam lock as standard, supplied with two keys, keyed to differ. Master option available at cost.
- ✓ Electronic push button lock
- ✓ Electronic RFID swipe card lock



Specification	
Material Thickness:	1.2mm Mild Steel
Construction:	Welded
Locks:	Cam Lock Standard



Code	Sizes in mm; H x W x D	Volume (L)	Fixing	Internal Shelving
POC100	275 x 370 x 250	25	Wall	Optional
POD213	220 x 160 x 320	20	Wall	Optional
POD313	320 x 160 x 320	28	Wall	Optional
POD314	420 x 160 x 320	30	Wall	Optional



# Drug & Medicine Cabinets - Tower & Base Units

Exceed the requirements for the storage of medicines in healthcare premises; BS2881:1989 Level one  
BS3621:1998 compliant 6-Pin euro profile cylinder lock supplied by Yale® - 3 keys supplied per lock

## Generic Tower & Base Unit Specification...

- ✓ Single door options.
- ✓ Wall fixing options.
- ✓ BS3621:1998 compliant lock, Kitemarked - KM532920, security grade 5.
- ✓ Compatible with Assa ABLOY® CLIQ™ electronic locking system. Integrating audit trails and remote management in real time.
- ✓ Mechanical push button option available.
- ✓ Can be optioned with a micro-switch to connect to external nurse call systems.
- ✓ Can be optioned with our external warning light system - factory fit option only.
- ✓ Mounting holes provided in the rear of the cabinet.
- ✓ Right hand opening as standard, left hand opening optional.
- ✓ Either plastic tray or shelving options available.
- ✓ Tower and base unit heights available.
- ✓ Full specification & stock levels online: [www.drugs-cabinets.co.uk](http://www.drugs-cabinets.co.uk)

## Standard Colours

- ✓ White epoxy powder coat



## Locking Options

- ✓ 6 Pin Euro profile, keyed to differ as standard
- ✓ Electronic push button lock
- ✓ Electronic RFID swipe card lock



Specification	
Material Thickness:	1.2mm Mild Steel
Construction:	Welded
Locks:	6 Pin Euro Profile standard

Code	Sizes in mm; H x W x D	Tower / Base	Internal Shelving
PMDTC01	1650 x 580 x 490mm	Tower	Plastic Trays
PMDTC02	1650 x 580 x 490mm	Tower	Shelving
PMDTC03	1650 x 580 x 490mm	Tower	Shelves with dividers
PMBU01	870 x 580 x 490mm	Base	Plastic Trays
PMBU02	870 x 580 x 490mm	Base	Shelving
PMBU03	870 x 580 x 490mm	Base	Shelves with dividers



## MDS Drugs Trolleys

Our MDS drugs trolley design has allowed us to offer many new features. These include electronic locking, a choice of coloured doors, note shelves and improved capacity. We've done all this and reduced the overall weight of the trolley without impacting on strength.

Our monitored dosage trolleys will withstand the rigours of a medicine round due to their very robust design. Locking swivel castors allow excellent manoeuvrability of the trolley through narrow doorways and corridors. Pharmacy Medical manufacture all these Monitored Dosage Drug Trolleys offering you quick delivery to anywhere within the mainland United Kingdom. All prices quoted INCLUDE delivery to any UK mainland address! Our highly qualified engineers manufacture all our Monitored Dosage System (MDS) Trolleys. This produces the highest possible standard of trolley.

## What to Look For...

Pharmacy Medicals continued design and development enables us to engineer out common problems found with MDS drugs trolleys. Our years of experience with drugs trolleys, ensures we know the common problems encountered daily. As a result, we have engineered our trolleys to be resilient and durable to these common problems. We have written more on this, however there are three main areas to look for when buying a drugs trolley:

- ✓ **Locks:** It can be found that locks are not durable enough to survive the repeated use they are subjected to, or that keys break in the locks themselves. Pharmacy Medical use a Yale cylinder combined with a quality mortice bolt to ensure a reliable lock and action. In addition, all trolleys feature an extended base to further protect the keys when they are in the lock. Should the worst happen, all our keys are easy to replace. Take one of the two spares to a hardware shop and they can cut a replacement usually whilst you wait.
- ✓ **Castors:** Castors can cause several problems on drugs trolleys. Often found to clog, or at worst fall off, they are vital yet often vulnerable. Pharmacy Medicals trolleys use hygienic medical castors. These anti-static castors are lockable and come with bumpers offering protection to the trolley, castor and the building itself. Furthermore, Pharmacy Medical bolt the castors using nyloc nuts to a reinforced base. This provides a strong anchor point and prevents the castors coming loose from the trolley.
- ✓ **Hinge:** The hinges used on a trolley is very important. The doors on the trolley can often carry the most weight as bottles of liquids are often stored here. Pharmacy Medical use full length piano hinge on their trolleys, ensuring that the doors will handle anything thrown at them.



Specification	
Material Thickness:	1.2mm Mild Steel
Construction:	Welded
Locks:	6 Pin Euro Profile standard





## Pharmacy Drugs Trolleys – Original Packaging

- ✓ Suitable for the storage & distribution of medicines and drugs.
- ✓ BS3621:1998 compliant 6-Pin euro profile cylinder Single and double door options.
- ✓ Available as double and single door options

## Generic Drugs Trolley Specification...

- ✓ Wall fixing clamp option.
- ✓ BS3621:1998 compliant lock, Kitemarked - KM532920, security grade 5.
- ✓ Compatible with Assa ABLOY® CLIQ™ electronic locking system. Integrating audit trails and remote management in real time.
- ✓ Electronic push button option available.
- ✓ Other door colours can be specified on request.
- ✓ Door shelves - 3 shelves per door.
- ✓ Upper work surface
- ✓ Push handles to one end
- ✓ 4 x locking 125mm polymer anti static castors with bumpers.
- ✓ When not in use, the trolley should be secured to the fabric of the building.
- ✓ Full specification & stock levels online: [www.drugs-cabinets.co.uk](http://www.drugs-cabinets.co.uk) lock supplied by Yale® - 3 keys supplied per lock.

## Standard Colours

- ✓ White epoxy powder coat – Body
- ✓ Spearmint epoxy powder coat - Doors

## Locking Options

- ✓ 6 Pin Euro profile as standard
- ✓ Electronic push button lock

## Dimensions

- ✓ Single Door - 1150mm H x 570mm W x 580mm D
- ✓ Double Door - 1160mm H x 780mm W (670mm less handles) x 580mm D



### Specification

Material Thickness: 1.2mm Mild Steel

Construction: Welded

Locks: 6 Pin Euro Profile standard

Code	Description	Doors	Internal Layout	Door Shelves
PM501	21 TRAY COMPACT UNIT DOSAGE TROLLEY	1	21 Blue Trays	3
PM650	25 TRAY COMPACT UNIT DOSAGE TROLLEY	2	25 Clear Trays	6
PM655	30 TRAY COMPACT UNIT DOSAGE TROLLEY	2	30 Clear Trays	6



# Double Sided Drugs Trolleys – Original Packaging

- ✓ Suitable for the storage & distribution of medicines and drugs.
- ✓ Larger capacity plastic bins.



## Generic Drugs Trolley Specification...

- ✓ Wall fixing clamp option.
- ✓ Electronic push button option available.
- ✓ Other door colours can be specified on request.
- ✓ Upper work surface
- ✓ Push handles to one end
- ✓ 4 x locking 125mm polymer anti static castors with bumpers.
- ✓ When not in use, the trolley should be secured to the fabric of the building.

## Standard Colours

- ✓ White epoxy powder coat – Body
- ✓ Spearmint epoxy powder coat - Doors

## Locking Options

- ✓ Cam Lock as standard
- ✓ Electronic push button lock

- ✓ PM660 Shown

Specification	
Material Thickness:	1.2mm Mild Steel
Construction:	Welded
Locks:	2 x Cam Locks

Code	Description	Doors	Internal Layout	Door Shelves
PM660	36 TRAY COMPACT UNIT DOSAGE TROLLEY	2	36 White / Teal Trays	0
PM665	24 TRAY COMPACT UNIT DOSAGE TROLLEY	2	24 White / Teal Trays	0





# Pharmacy Drugs Trolleys - MDS Blister Pack System - Hooks

- ✓ Suitable for the storage & distribution of medicines and drugs.
- ✓ BS3621:1998 compliant 6-Pin euro profile cylinder Single and double door options.
- ✓ Available as double and single door options

## Generic Drugs Trolley Specification...

- ✓ Wall fixing clamp option.
- ✓ BS3621:1998 compliant lock, Kitemarked - KM532920, security grade 5.
- ✓ Compatible with Assa ABLOY® CLIQ™ electronic locking system. Integrating audit trails and remote management in real time.
- ✓ Electronic push button option available.
- ✓ Other door colours can be specified on request.
- ✓ Door shelves - 3 shelves per door.
- ✓ Upper work surface
- ✓ Push handles to one end
- ✓ 4 x locking 125mm polymer anti static castors with bumpers.
- ✓ When not in use, the trolley should be secured to the fabric of the building.
- ✓ Full specification & stock levels online: [www.drugs-cabinets.co.uk](http://www.drugs-cabinets.co.uk) lock supplied by Yale® - 3 keys supplied per lock.

## Standard Colours

- ✓ White epoxy powder coat – Body
- ✓ Spearmint epoxy powder coat - Doors

## Locking Options

- ✓ 6 Pin Euro profile as standard
- ✓ Electronic push button lock
- ✓ Electronic RFID swipe card lock

## Dimensions

- ✓ Single Door - 1150mm H x 570mm W x 580mm D
- ✓ Double Door - 1160mm H x 780mm W (670mm less handles) x 580mm D



Specification	
Material Thickness:	1.2mm Mild Steel
Construction:	Welded
Locks:	6 Pin Euro Profile standard

Code	Description	Doors	Internal Layout	Door Shelves
PM110	Monitored Dosage Trolley   4 Hoop	1	4 Hooks	3
PM210	Monitored Dosage Trolley   6 Hoop	2	6 Hooks	6



# Pharmacy Drugs Trolleys - MDS Blister Pack System - Shelves

- ✓ Suitable for the storage & distribution of medicines and drugs.
- ✓ BS3621:1998 compliant 6-Pin euro profile cylinder Single and double door options.
- ✓ Available as double and single door options

## Generic Drugs Trolley Specification...

- ✓ Wall fixing clamp option.
- ✓ BS3621:1998 compliant lock, Kitemarked - KM532920, security grade 5.
- ✓ Compatible with Assa ABLOY® CLIQ™ electronic locking system. Integrating audit trails and remote management in real time.
- ✓ Electronic push button option available.
- ✓ Other door colours can be specified on request.
- ✓ Door shelves - 3 shelves per door.
- ✓ Internal Shelves – 3 Height adjustable shelves.
- ✓ Upper work surface
- ✓ Push handles to one end
- ✓ 4 x locking 125mm polymer anti static castors with bumpers.
- ✓ When not in use, the trolley should be secured to the fabric of the building.
- ✓ Full specification & stock levels online: [www.drugs-cabinets.co.uk](http://www.drugs-cabinets.co.uk) lock supplied by Yale® - 3 keys supplied per lock.

## Standard Colours

- ✓ White epoxy powder coat – Body
- ✓ Spearmint epoxy powder coat - Doors

## Locking Options

- ✓ 6 Pin Euro profile as standard
- ✓ Electronic push button lock
- ✓ Electronic RFID swipe card lock

## Dimensions

- ✓ Single Door - 1150mm H x 570mm W x 580mm D
- ✓ Double Door - 1160mm H x 780mm W (670mm less handles) x 580mm D



Specification	
Material Thickness:	1.2mm Mild Steel
Construction:	Welded
Locks:	6 Pin Euro Profile standard

Code	Description	Doors	Internal Layout	Door Shelves
PM150	Monitored Dosage Trolley   6 Hoop	1	3 Shelves	3
PM220	Monitored Dosage Trolley   9 Hoop	2	3 Shelves	6



## Hospital Furniture



## IV Poles / Infusion Stands

### Generic Specification...

- ✓ Stainless steel or powder coated mild steel options.
- ✓ Standard or weighted bases.
- ✓ 2 or 4 hook upper
- ✓ Height adjustable 1270 – 2000mm
- ✓ 35mm rubber twin wheel castors – 2 braked

### Dimensions

- ✓ 650 x 650 x 1270-2000mm

Our mild steel IV stands feature a box section steel base with a 5 prong star design and 5 castors for increased stability. Welded to this is a mild steel upright housing a stainless steel upper section. Atop this are 2 or 4 pig tail type hooks designed to hold IV's etc. A weighted base is optional and recommended for larger bags. The mild steel lower section of this trolley is powder coated white.

Our stainless steel IV stands feature a stainless steel box section steel base with a 5 prong star design and 5 castors for increased stability. Welded to this is a stainless steel upright housing a stainless steel upper section. Atop this are 2 or 4 pig tail type hooks designed to hold IV's etc. A weighted base is optional and recommended for larger bags.



# HTM71

Manufactured in house at Pharmacy Medical, these storage units are designed to offer HTM71 compatible storage and dispensing solutions. Manufactured from either powder coated mild steel or medical grade mild steel, all our ward trolleys are fitted with 75mm braked castors for easy manoeuvrability, or feet on the storage units. All our ward trolleys are also fitted with a removable stainless steel top and protective bumpers at all four corners.

All our ward trolleys feature enclosed sides to improve the security of the contents stored within. Furthermore, these trolleys can be fitted with a locked door, increasing security further. As standard the trolleys and storage units are supplied with fixed antibacterial liners that can be easily cleaned and allow for multiple positioning of the optional trays they are designed to house. The principle is the same for our HTM71 storage units, enclosed sides and optional locking doors add another level of security.

## Options:

Our HTM71 style trolleys can be optioned with:

- ✓ Medical grade stainless steel construction.
- ✓ Internal HTM71 plastic trays.
- ✓ Locking doors.
- ✓ Landscape or portrait construction.
- ✓ Push handles fitted to one end.

Our HTM71 style cabinets can be optioned with:

- ✓ Medical grade stainless steel construction.
- ✓ Internal HTM71 plastic trays.
- ✓ Locking doors.
- ✓ Landscape or portrait construction.

## Features:

- ✓ Mild steel powder-coated construction.
- ✓ Supplied fully assembled (just position your optional trays).
- ✓ Locking castors fitted to all four corners (trolleys only).
- ✓ Protective bumpers fitted to all four corners (trolleys only).
- ✓ Removable stainless steel top (trolleys only).



# HTM71

## Cabinets...



Our latest slim design of HTM71 cabinet features similar sizes to a traditional timber unit, whilst offering greater security. BS2881:1989 level 1 compliant HTM71 cabinets.

Manufactured in house at Pharmacy Medical, these HTM71 cabinets are designed to offer HTM71 compatible ward racking for storage and dispensing. Manufactured from either powder coated mild steel, they offer enhanced security.

All our ward cabinets feature 1.2mm thick mild steel construction to improve the security of the contents stored within.

Furthermore, these cabinets are fitted with a locked door, increasing security further. As standard the cabinets are supplied with fixed antibacterial liners that can be easily cleaned and allow for multiple positioning of the optional trays they are designed to house.

As standard, all our ward cabinets feature the following:

- ✓ Mild steel welded and powder-coated construction.
- ✓ Supplied fully assembled (just position your optional trays).
- ✓ Single point locking, one lock supplied with three keys.
- ✓ BS3621 compliant lock, supplied by Yale
- ✓ BS BS2881:1989, level one

The cabinets can be optioned with:

- ✓ Internal HTM71 plastic trays.
- ✓ Landscape or portrait construction.





# HTM71

## Trolleys...

Manufactured in house at Pharmacy Medical, these HTM71 trolleys are designed to offer HTM71 compatible ward trolleys for storage and dispensing. Manufactured from either powder coated mild steel or medical grade mild steel, all our ward trolleys are fitted with 75mm braked castors for easy maneuverability. All our ward trolleys are also fitted with a removable stainless-steel top and protective bumpers at all four corners.

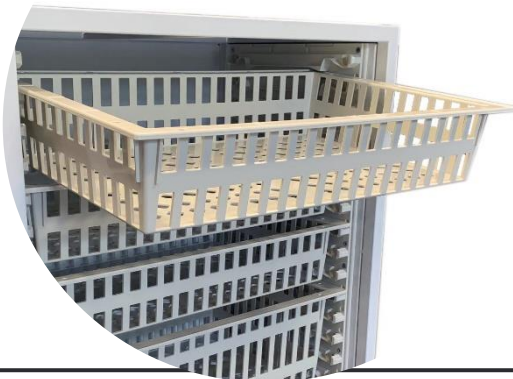
All our ward trolleys feature enclosed sides to improve the security of the contents stored within. Furthermore, these trolleys can be fitted with a locked door, increasing security further. As standard the trolleys are supplied with fixed antibacterial liners that can be easily cleaned and allow for multiple positioning of the optional trays they are designed to house.

As standard, all our ward trolleys feature the following:

- ✓ Mild steel powder-coated construction.
- ✓ Supplied fully assembled (just position your optional trays).
- ✓ Locking castors fitted to all four corners.
- ✓ Protective bumpers fitted to all four corners.
- ✓ Removable stainless-steel top.

The trolleys can be optioned with:

- ✓ Medical grade stainless steel construction.
- ✓ Internal HTM71 plastic trays.
- ✓ Locking doors.
- ✓ Landscape or portrait construction.
- ✓ Push handles fitted to one end.
- ✓ A wide range of colour options



## Medical Records Trolleys

- ✓ Suitable for the secure storage of medical records
- ✓ Available with secure locked compartments.

## Generic Trolley Specification...

- ✓ Secure upper storage are (when lock optioned)
- ✓ Secure Lower storage cupboard (Secure Trolleys Only)
- ✓ Compatible with Assa ABLOY® CLIQ™ electronic locking system. Integrating audit trails and remote management in real time.
- ✓ Lower Shelf. – None secure units
- ✓ 4 x 125mm anti static braked castors, supplied with bumpers.
- ✓ Full specification & stock levels online: [www.drugs-cabinets.co.uk](http://www.drugs-cabinets.co.uk)

## Standard Colours

- ✓ Cabinet: - White Epoxy powder coat
- ✓ Doors – Spearmint Epoxy powder coat

## Dimensions

- ✓ Small - (H x W x D) 670mm x 520mm x 1000mm
- ✓ Medium - (H x W x D) 850mm x 520mm x 1000mm
- ✓ Large - (H x W x D) 1160mm x 520mm x 1000mm
- ✓ Secure Small - 950mm High x 800mm Wide x 470mm Deep
- ✓ Secure Large - 950mm High x 1040mm Wide x 470mm Deep (Shown)

## Locking

- ✓ Unlocked
- ✓ Cam Lock
- ✓ Push Button Key Code Lock





# Dispensing Trolleys - Standard & High Capacity

- ✓ Suitable for the storage & dispensing of drugs & medicines.
- ✓ BS3621:1998 compliant 6-Pin euro profile cylinder lock supplied by Yale® - 3 keys supplied per lock.

## Generic Trolley Specification...

- ✓ Single door to main medicine storage area.
- ✓ BS3621:1998 compliant lock, Kitemarked - KM532920, security grade 5.
- ✓ Compatible with Assa ABLOY® CLIQ™ electronic locking system. Integrating audit trails and remote management in real time.
- ✓ Lower Shelf.
- ✓ Hinged note shelf to one side.
- ✓ Two slide out plastic storage or waste bins.
- ✓ 4 x 125mm anti static braked castors, supplied with bumpers.
- ✓ 5 Tier rack - Optional
- ✓ Full specification & stock levels online: [www.drugs-cabinets.co.uk](http://www.drugs-cabinets.co.uk)

## Standard Colours

- ✓ Cabinet: White - Epoxy powder coat
- ✓ Shelf & note tray - Spearmint

## Dimensions

- ✓ Small - 650mm W x 470mm D x 1100mm H
- ✓ Medium - 890mm W x 470mm D x 1100mm H
- ✓ Large - 1050mm W x 470mm D x 1100mm H



Specification	
Material Thickness:	1.2mm Mild Steel
Construction:	Welded
Locks:	Cam Lock standard



CareKarts



# CareKarts – Low Level, Single Width

A very popular sight across healthcare premises. CareKart trolleys offer a compact and manoeuvrable storage solution for all healthcare environments. Fitted with hanging rails to further improve their usability they are available in powder coated or stainless steel construction, with bumpered castors or height adjustable feet, as well as in a wide range of heights and widths.

## Standard Colours

- ✓ Trolley: - White Epoxy powder coat with turquoise sides
- ✓ Drawers – Primary Green standard (other colours & transparent options available)



# Generic Trolley Specification...

- ✓ Suitable for the secure storage of loose items etc
- ✓ Removable stainless steel work surface
- ✓ Hanging rail to accept a range of optional items
- ✓ Single and double column versions, with and without push handles
- ✓ Secure doors optional
- ✓ Solid colour drawers standard, transparent optional
- ✓ Full specification & stock levels online: [www.drugs-cabinets.co.uk](http://www.drugs-cabinets.co.uk)

Code	Description
CK001	CareKart STORAGE TROLLEY, LOW LEVEL, SINGLE COLUMN   4 x 80mm Trays   Push Handles
CK002	CareKart STORAGE TROLLEY, LOW LEVEL, SINGLE COLUMN   3 x 80mm, 1 x 160mm Trays   Push Handles
CK003	CareKart STORAGE TROLLEY, LOW LEVEL, SINGLE COLUMN   3 x 160mm Trays   Push Handles
CK004	CareKart STORAGE TROLLEY, LOW LEVEL, SINGLE COLUMN   1 x 80mm, 2 x 160mm Trays   Push Handles
CK005	CareKart STORAGE TROLLEY, LOW LEVEL, SINGLE COLUMN   4 x 80mm Trays   NO Handles
CK006	CareKart STORAGE TROLLEY, LOW LEVEL, SINGLE COLUMN   3 x 80mm, 1 x 160mm Trays   NO Handles
CK007	CareKart STORAGE TROLLEY, LOW LEVEL, SINGLE COLUMN   3 x 160mm Trays   NO Handles
CK008	CareKart STORAGE TROLLEY, LOW LEVEL, SINGLE COLUMN   1 x 80mm, 2 x 160mm Trays   NO Handles



# CareKarts – Low Level, Double Width

These trolleys are available as standard in a wide range of variations, with different drawer and handle combinations as standard. Furthermore we offer customisation to stainless steel frames, double width variations and double height versions too. Please contact us for more information.

# Generic Trolley Specification...

- ✓ Suitable for the secure storage of loose items etc
- ✓ Removable stainless steel work surface
- ✓ Hanging rail to accept a range of optional items
- ✓ Single and double column versions, with and without push handles
- ✓ Secure doors optional
- ✓ Solid colour drawers standard, transparent optional
- ✓ Full specification & stock levels online: [www.drugs-cabinets.co.uk](http://www.drugs-cabinets.co.uk)

# Standard Colours

- ✓ Trolley: - White Epoxy powder coat with turquoise sides
- ✓ Drawers – Primary Green standard.



Code	Description
CK009	CareKart STORAGE TROLLEY, LOW LEVEL, DOUBLE COLUMN   8 x 80mm Trays   Push Handles
CK010	CareKart STORAGE TROLLEY, LOW LEVEL, DOUBLE COLUMN   7 x 80mm, 1 x 160mm Trays   Push Handles
CK011	CareKart STORAGE TROLLEY, LOW LEVEL, DOUBLE COLUMN   6 x 80mm, 2 x 160mm Trays   Push Handles
CK012	CareKart STORAGE TROLLEY, LOW LEVEL, DOUBLE COLUMN   6 x 160mm Trays   Push Handles
CK013	CareKart STORAGE TROLLEY, LOW LEVEL, DOUBLE COLUMN   4 x 80mm, 3 x 160mm Trays   Push Handles
CK014	CareKart STORAGE TROLLEY, LOW LEVEL, DOUBLE COLUMN   3 x 80mm, 4 x 160mm Trays   Push Handles
CK015	CareKart STORAGE TROLLEY, LOW LEVEL, DOUBLE COLUMN   8 x 80mm Trays   NO Handles
CK016	CareKart STORAGE TROLLEY, LOW LEVEL, DOUBLE COLUMN   7 x 80mm, 1 x 160mm Trays   NO Handles
CK017	CareKart STORAGE TROLLEY, LOW LEVEL, DOUBLE COLUMN   6 x 80mm, 2 x 160mm Trays   NO Handles
CK018	CareKart STORAGE TROLLEY, LOW LEVEL, DOUBLE COLUMN   6 x 160mm Trays   NO Handles
CK019	CareKart STORAGE TROLLEY, LOW LEVEL, DOUBLE COLUMN   4 x 80mm, 3 x 160mm Trays   NO Handles
CK020	CareKart STORAGE TROLLEY, LOW LEVEL, DOUBLE COLUMN   3 x 80mm, 4 x 160mm Trays   NO Handles



# CareKarts – Standard Level, Single Width

These trolleys are available as standard in a wide range of variations, with different drawer and handle combinations as standard. Furthermore we offer customisation to stainless steel frames, double width variations and double height versions too. Please contact us for more information.

## Standard Colours

- ✓ Trolley: - White Epoxy powder coat with turquoise sides
- ✓ Drawers – Primary Green standard.



# Generic Trolley Specification...

- ✓ Suitable for the secure storage of loose items etc
- ✓ Removable stainless steel work surface
- ✓ Hanging rail to accept a range of optional items
- ✓ Single and double column versions, with and without push handles
- ✓ Secure doors optional
- ✓ Solid colour drawers standard, transparent optional
- ✓ Full specification & stock levels online: [www.drugs-cabinets.co.uk](http://www.drugs-cabinets.co.uk)

Code	Description
CK101	CareKart STORAGE TROLLEY, STANDARD HEIGHT, SINGLE COLUMN   6 x 80mm Trays   Push Handles
CK102	CareKart STORAGE TROLLEY, STANDARD HEIGHT, SINGLE COLUMN   4 x 80mm, 1 x 160mm Trays   Push Handles
CK103	CareKart STORAGE TROLLEY, STANDARD HEIGHT, SINGLE COLUMN   4 x 160mm Trays   Push Handles
CK104	CareKart STORAGE TROLLEY, STANDARD HEIGHT, SINGLE COLUMN   3 x 80mm, 2 x 160mm Trays   Push Handles
CK105	CareKart STORAGE TROLLEY, STANDARD HEIGHT, SINGLE COLUMN   1 x 80mm, 3 x 160mm   Push Handles
CK106	CareKart STORAGE TROLLEY, STANDARD HEIGHT, SINGLE COLUMN   6 x 80mm Trays   NO Handles
CK107	CareKart STORAGE TROLLEY, STANDARD HEIGHT, SINGLE COLUMN   4 x 80mm, 1 x 160mm Trays   NO Handles
CK108	CareKart STORAGE TROLLEY, STANDARD HEIGHT, SINGLE COLUMN   4 x 160mm Trays   NO Handles
CK109	CareKart STORAGE TROLLEY, STANDARD HEIGHT, SINGLE COLUMN   3 x 80mm, 2 x 160mm Trays   NO Handles
CK110	CareKart STORAGE TROLLEY, STANDARD HEIGHT, SINGLE COLUMN   1 x 80mm, 3 x 160mm   NO Handles



# CareKarts – Standard Level, Double Width

These trolleys are available as standard in a wide range of variations, with different drawer and handle combinations as standard. Furthermore we offer customisation to stainless steel frames, double width variations and double height versions too. Please contact us for more information.

# Generic Trolley Specification...

- ✓ Suitable for the secure storage of loose items etc
- ✓ Removable stainless steel work surface
- ✓ Hanging rail to accept a range of optional items
- ✓ Single and double column versions, with and without push handles
- ✓ Secure doors optional
- ✓ Solid colour drawers standard, transparent optional
- ✓ Full specification & stock levels online: [www.drugs-cabinets.co.uk](http://www.drugs-cabinets.co.uk)

## Standard Colours

- ✓ Trolley: - White Epoxy powder coat with turquoise sides
- ✓ Drawers – Primary Green standard.



Code	Description
CK111	CareKart STORAGE TROLLEY, STANDARD HEIGHT, DOUBLE COLUM   3 x 80mm, 6 x 160mm Trays   NO Handles
CK112	CareKart STORAGE TROLLEY, STANDARD HEIGHT, DOUBLE COLUM   4 x 80mm, 5 x 160mm Trays   NO Handles
CK113	CareKart STORAGE TROLLEY, STANDARD HEIGHT, DOUBLE COLUM   8 x 160mm Trays   NO Handles
CK114	CareKart STORAGE TROLLEY, STANDARD HEIGHT, DOUBLE COLUM   5 x 80mm, 4 x 160mm Trays   NO Handles
CK115	CareKart STORAGE TROLLEY, STANDARD HEIGHT, DOUBLE COLUM   6 x 80mm, 4 x 160mm Trays   NO Handles
CK116	CareKart STORAGE TROLLEY, STANDARD HEIGHT, DOUBLE COLUM   8 x 80mm, 2 x 160mm Trays   NO Handles



## CareKarts – Double Level, Single Width

These trolleys are available as standard in a wide range of variations, with different drawer and handle combinations as standard. Furthermore we offer customisation to stainless steel frames, double width variations and double height versions too. Please contact us for more information.

## Standard Colours

- ✓ Trolley: - White Epoxy powder coat with turquoise sides
- ✓ Drawers – Primary Green standard.

## Generic Trolley Specification...

- ✓ Suitable for the secure storage of loose items etc
- ✓ Removable stainless steel work surface
- ✓ Hanging rail to accept a range of optional items
- ✓ Single and double column versions, with and without push handles
- ✓ Secure doors optional
- ✓ Solid colour drawers standard, transparent optional
- ✓ Full specification & stock levels online: [www.drugs-cabinets.co.uk](http://www.drugs-cabinets.co.uk)

Code	Description
CK117	CareKart STORAGE TROLLEY, SINGLE COLUMN DOUBLE HEIGHT   2 Shallow, 5 Deep Trays
CK118	CareKart STORAGE TROLLEY, SINGLE COLUMN DOUBLE HEIGHT   3 Shallow, 4 Deep Trays
CK119	CareKart STORAGE TROLLEY, SINGLE COLUMN DOUBLE HEIGHT   4 Shallow, 3 Deep Trays
CK120	CareKart STORAGE TROLLEY, SINGLE COLUMN DOUBLE HEIGHT   5 Shallow, 3 Deep Trays
CK121	CareKart STORAGE TROLLEY, SINGLE COLUMN DOUBLE HEIGHT   6 Deep Trays
CK122	CareKart STORAGE TROLLEY, SINGLE COLUMN DOUBLE HEIGHT   8 Shallow, 1 Deep Trays





## CareKarts – Double Level, Double Width

These trolleys are available as standard in a wide range of variations, with different drawer and handle combinations as standard. Furthermore we offer customisation to stainless steel frames, double width variations and double height versions too. Please contact us for more information.

## Standard Colours

- ✓ Trolley: - White Epoxy powder coat with turquoise sides
- ✓ Drawers – Primary Green standard.

## Generic Trolley Specification...

- ✓ Suitable for the secure storage of loose items etc
- ✓ Removable stainless steel work surface
- ✓ Hanging rail to accept a range of optional items
- ✓ Single and double column versions, with and without push handles
- ✓ Secure doors optional
- ✓ Solid colour drawers standard, transparent optional
- ✓ Full specification & stock levels online: [www.drugs-cabinets.co.uk](http://www.drugs-cabinets.co.uk)

Code	Description
CK123	CareKart STORAGE TROLLEY, DOUBLE COLUMN DOUBLE HEIGHT   2 Shallow, 10 Deep Trays
CK124	CareKart STORAGE TROLLEY, DOUBLE COLUMN DOUBLE HEIGHT   6 Shallow, 8 Deep Trays
CK125	CareKart STORAGE TROLLEY, DOUBLE COLUMN DOUBLE HEIGHT   8 Shallow, 6 Deep Trays
CK126	CareKart STORAGE TROLLEY, DOUBLE COLUMN DOUBLE HEIGHT   10 Shallow, 6 Deep Trays
CK127	CareKart STORAGE TROLLEY, DOUBLE COLUMN DOUBLE HEIGHT   12 Deep Trays
CK128	CareKart STORAGE TROLLEY, DOUBLE COLUMN DOUBLE HEIGHT   16 Shallow, 2 Deep Trays





# Carry Carts

- ✓ Ideal for storage of loose items, or for storage and distribution.
- ✓ Colour coded trays to assist

## Generic Trolley Specification...

- ✓ Easy to clean, powder coated steel frame.
- ✓ Easy to steer and manoeuvre, with ergonomic handles and braked & bumped castors for safety.
- ✓ Featuring the unique Glide & Tilt® system for easy and safe access
- ✓ Spare Trays Available
- ✓ Available either with our without double depth trays.
- ✓ Full specification & stock levels online: [www.drugs-cabinets.co.uk](http://www.drugs-cabinets.co.uk)

## Standard Colours

- ✓ Primary Green
- ✓ Primary Blue
- ✓ Primary Yellow
- ✓ Light Grey
- ✓ Primary Red
- ✓ Transparent trays are available (at extra cost)



Code	Description
PM-CARRY/2	2 Tier Carry Cart with 12 Tray Capacity
PM-CARRY/2T	2 Tier Carry Cart with 12 Trays - Primary Colours
PM-CARRY/3	3 Tier Carry Cart with 18 Tray Capacity
PM-CARRY/3T	3 Tier Carry Cart with 18 Trays - Primary Colours
PM-CARRY/4	4 Tier Carry Cart with 24 Tray Capacity
PM-CARRY/4T	4 Tier Carry Cart with 24 Trays - Primary Colours



## Distribution Trolleys - Lockable Drawers

- ✓ Suitable for the storage & distribution of medicines and drugs from the pharmacy to the ward
- ✓ Also suitable for self-administration and patients own drugs schemes

## Generic Trolley Specification...

- ✓ Provides secure delivery of drugs and medicines from the pharmacy to the ward.
- ✓ When the drawers are locked, they are secured in place.
- ✓ BS3621:1998 compliant 6-Pin euro profile cylinder lock supplied by Yale® - 3 keys supplied per lock.
- ✓ BS3621:1998 compliant lock, Kitemarked - KM532920, security grade 5.
- ✓ Compatible with Assa ABLOY® CLIQ™ electronic locking system. Integrating audit trails and remote management in real time.
- ✓ Master keys are available at an additional cost.
- ✓ Upper work surface.
- ✓ Document pocket fitted to one end.
- ✓ Push handles to both end.
- ✓ 4 x locking 125mm polymer anti static castors with bumpers to protect the building.
- ✓ Available with 15 or 18 drawers.
- ✓ Full specification & stock levels online: [www.drugs-cabinets.co.uk](http://www.drugs-cabinets.co.uk)

## Standard Colours

- ✓ White epoxy powder coat – Body
- ✓ Spearmint epoxy powder coat - Doors

## Dimensions

- ✓ 15 Drawer: 1030mm W x 1000mm H x 525mm D
- ✓ 18 Drawer: 1190mm W x 1000mm H x 525mm D

Specification	
Material Thickness:	1.2mm Mild Steel
Construction:	Welded
Locks:	Cam Lock standard

Code	Description	Drawers
PMDT1501	Ward Distribution Trolley	15
PMDT1801	Ward Distribution Trolley High Capacity	18



# Gas Storage Cabinets

- ✓ designed to store general gas cylinders securely outside.
- ✓ Available with internal racking to store medical gas cylinders (Shown).

# Generic Specification...

- ✓ 1.2mm thick stainless steel construction
- ✓ Ventilated doors
- ✓ Welded construction
- ✓ 3-point locking system
- ✓ Optional additional hasp and staple lock



# Dimensions

- ✓ 1460mm High x 1100mm Wide x 680mm Deep

Specification	
Material Thickness:	1.2mm Stainless Steel
Construction:	Welded
Locks:	Multi Point Lock standard



## Refrigeration

The Labcold IntelliCold® Pharmacy range has been designed and developed from the ground up for the safe storage of temperature sensitive medicines and vaccines as advised by Public Health England in Protocol for Ordering, Storing and Handling Vaccines.

Featuring the IntelliCold® controller, which automatically records the internal temperature and other fridge functions, these pharmacy refrigerators are designed to meet the requirements of medical professionals.

Backed by a comprehensive FREE 5 year parts and labour warranty\*, the Labcold IntelliCold® range is packed with extra features like alarm battery back up and can be further enhanced by the option of a digital lock or repeat alarm.

There are also FREE exclusive Labcold penguins in some of these refrigerators – a must for serious Labcold penguin collectors!

\* Free SD card and 5 year warranty UK customers only. You MUST register your warranty with Labcold to qualify.



# Hazardous Substance CoSHH Cabinets

- ✓ Hazardous substance cabinets enable workplaces to clearly isolate and identify hazardous substances as set out in CoSHH guidelines.
- ✓ Yellow Colour supplied with the relevant warning labels



## Generic Specification...

- ✓ 1.2mm mild steel construction
- ✓ Welded liquid retaining sump
- ✓ 3 point locking system supplied with 2 keys
- ✓ Highly visible warning labels
- ✓ Yellow colour powder coated finish
- ✓ Height adjustable shelving
- ✓ UK manufactured

Specification	
Material Thickness:	1.2mm Mild Steel
Construction:	Welded
Locks:	Multi Point Lock standard

Code	Description	Doors	Internal Shelves
HAZ733	HAZARDOUS SUBSTANCE CABINET   SINGLE DOOR, ONE SHELF   700mm (H) x 350mm (W) x 300mm (D)   YELLOW	1	1
HAZ633	HAZARDOUS SUBSTANCE CABINET   SINGLE DOOR, ONE SHELF   600mm (H) x 600mm (W) x 300mm (D)   YELLOW	1	1
HAZ944	HAZARDOUS SUBSTANCE CABINET   SINGLE DOOR, ONE SHELF   900mm (H) x 460mm (W) x 460mm (D)   YELLOW	1	1
HAZ794D	HAZARDOUS SUBSTANCE CABINET   DOUBLE DOOR, TWO SHELVES   700mm (H) x 900mm (W) x 460mm (D)   YELLOW	2	2
HAZ994D	HAZARDOUS SUBSTANCE CABINET   DOUBLE DOOR, TWO SHELVES   900mm (H) x 900mm (W) x 460mm (D)   YELLOW	2	2
HAZ1294D	HAZARDOUS SUBSTANCE CABINET   DOUBLE DOOR, FOUR SHELVES   1200mm (H) x 900mm (W) x 460mm (D)   YELLOW	2	4
HAZ1874D	HAZARDOUS SUBSTANCE CABINET   DOUBLE DOOR, FOUR SHELVES   1800mm (H) x 700mm (W) x 400mm (D)   YELLOW	2	4





# General CoSHH Cabinets

- ✓ CoSHH cabinets enable workplaces to clearly isolate and identify general CoSHH substances as set out in CoSHH guidelines.
- ✓ Grey Colour supplied with the relevant warning labels



## Generic Specification...

- ✓ 1.2mm mild steel construction
- ✓ Welded liquid retaining sump
- ✓ 3 point locking system supplied with 2 keys
- ✓ Highly visible warning labels
- ✓ Grey colour powder coated finish
- ✓ Height adjustable shelving
- ✓ UK manufactured

Specification	
Material Thickness:	1.2mm Mild Steel
Construction:	Welded
Locks:	Multi Point Lock standard

Code	Description	Doors	Internal Shelves
CH733	GENERAL COsHH CABINET   SINGLE DOOR, ONE SHELF   700mm (H) x 350mm (W) x 300mm (D)   GREY	1	1
CH633	GENERAL COsHH CABINET   SINGLE DOOR, ONE SHELF   600mm (H) x 600mm (W) x 300mm (D)   GREY	1	1
CH944	GENERAL COsHH CABINET   SINGLE DOOR, ONE SHELF   900mm (H) x 460mm (W) x 460mm (D)   GREY	1	1
CH794D	GENERAL COsHH CABINET   DOUBLE DOOR, TWO SHELVES   700mm (H) x 900mm (W) x 460mm (D)   GREY	2	2
CH994D	GENERAL COsHH CABINET   DOUBLE DOOR, TWO SHELVES   900mm (H) x 900mm (W) x 460mm (D)   GREY	2	2
CH1294D	GENERAL COsHH CABINET   DOUBLE DOOR, FOUR SHELVES   1200mm (H) x 900mm (W) x 460mm (D)   GREY	2	4



# Acid and Alkali CoSHH Cabinets

- ✓ Acid and alkali cabinets enable workplaces to clearly isolate and identify caustic substances as set out in CoSHH guidelines.
- ✓ White Colour supplied with the relevant warning labels



## Generic Specification...

- ✓ 1.2mm mild steel construction
- ✓ Welded liquid retaining sump
- ✓ 3 point locking system supplied with 2 keys
- ✓ Highly visible warning labels
- ✓ White colour powder coated finish
- ✓ Height adjustable shelving
- ✓ UK manufactured



Specification	
Material Thickness:	1.2mm Mild Steel
Construction:	Welded
Locks:	Multi Point Lock standard

Code	Description	Doors	Internal Shelves
AA733	ACID/ALKALI CABINET   SINGLE DOOR, ONE SHELF   700mm (H) x 350mm (W) x 300mm (D)   WHITE	1	1
AA633	ACID/ALKALI CABINET   SINGLE DOOR, ONE SHELF   600mm (H) x 600mm (W) x 300mm (D)   WHITE	1	1
AA944	ACID/ALKALI CABINET   SINGLE DOOR, ONE SHELF   900mm (H) x 460mm (W) x 460mm (D)   WHITE	1	1
AA794D	ACID/ALKALI CABINET   DOUBLE DOOR, TWO SHELVES   700mm (H) x 900mm (W) x 460mm (D)   WHITE	2	2
AA994D	ACID/ALKALI CABINET   DOUBLE DOOR, TWO SHELVES   900mm (H) x 900mm (W) x 460mm (D)   WHITE	2	2
AA1294D	ACID/ALKALI CABINET   DOUBLE DOOR, FOUR SHELVES   1200mm (H) x 900mm (W) x 460mm (D)   WHITE	2	4



## Drug Denaturing Kits

These controlled drug denaturing kits are to be used with tablets, powders, liquids and ampules. All of our denaturing kits are available from stock for next day delivery.

Here at Pharmacy Medical we manufacture a wide range of drug denaturing kits. Our kits are available in a wide range of sizes to meet all requirements. From 30ml through to our 5 litre denaturing kit, we have a size to suit all denaturing requirements.

Our single use denaturing kits provide a cost effective solution to denaturing small volumes of drugs. Used by pharmacies, NHS and Ambulance services alike, they save money and reduce waste. We manufacture these ourselves. As a result savings are available for large order volumes. Please contact us for information.

We keep all our denaturing kits in stock making them available for same day dispatch if ordered before 11AM.

As well as keeping our denaturing kits in stock, as we manufacture them ourselves. As a result we can make bespoke sizes, and offer discounts for bulk and repeat orders.

Our denaturing kits are available in a comprehensive range of sizes. By offering such a comprehensive range, we hope there will be a denaturing kit to meet your needs. Drug denaturing kits are a key part of pharmacy drug disposal. We are here to help find the right one for you, at the right price.

Buy your denaturing kits from us with piece of mind they will be with you quickly and safely.

If you need any assistance, please get in touch, we will be happy to help!



Code	Description
PMDEN250	DRUG DENATURING KIT   250ml   PACK OF 1
3PMDEN250	DRUG DENATURING KIT   250ml   PACK OF 3
10PMDEN250	DRUG DENATURING KIT   250ml   PACK OF 10
PMDEN500	DRUG DENATURING KIT   500ml   PACK OF 1
PMDEN1000	DRUG DENATURING KIT   1000ml   PACK OF 1
2PMDEN1000	DRUG DENATURING KIT   1000ml   PACK OF 2
PMDEN2000	DRUG DENATURING KIT   2000ml   PACK OF 1
PMDEN5000	DRUG DENATURING KIT   5000ml   PACK OF 1



## How to Order...

- ✓ Orders are required in writing and can be sent to us via post or email. We can accept orders over the telephone, however we will require written confirmation, or payment in full at the time of order.
- ✓ We do not offer account facilities for companies ordering less than 10 units per month.
- ✓ We accept official NHS purchase orders providing they are on official headed paper.
- ✓ All orders must contain an order number, contact name, telephone number and delivery & billing addresses.
- ✓ All current single item prices are available on our website, or you can request a quotation.
- ✓ Payments can be made via cheque, bank transfer or credit / debit card. We prefer for security reasons that you purchase single quantities through our website, however we can accept payments over the telephone.
- ✓ Full terms and conditions can be seen on our website at [www.drugs-cabinets.co.uk](http://www.drugs-cabinets.co.uk)
- ✓ For further information, assistance and clarification, please call us on 01623 559966

## Legal...

- ✓ Pharmacy Medical is a registered trademark of HEC Showman Ltd.
- ✓ HEC Showman Ltd is registered company in England and Wales 3381086, VAT number 694 3803 06
- ✓ All cheques to be made payable to HEC Showman Ltd
- ✓ For full terms and conditions, delivery times and all other products, please see our website
- ✓ All information correct at time of print, specifications subject to change without notice.

- ✓ The Made in Britain logo is copyright of the Great Britain Campaign. Pharmacy Medicals limited company, HEC Showman limited is a paid up member at the time of print.

